

Design

Datum aukce: 20.06.2024, 14:00

Typ aukce: Online aukce

Nejlepší nabídka bez poplatku kupujícího a DPH



Čís. Položky 1

A “Vermelha Chair”, designed by Fernando & Humberto Campana,

Dosažená cena:

EUR 2.000,-

Vyvolávací cena:

EUR 2.000,-

1993, for Edra / Italy, three-leg construction made of powder-coated tubular steel, cotton rope with acrylic core, height c. 78 cm, width c. 80 cm, depth c. 60 cm, height of seat c. 38 cm. Slight signs of age and use, scratches and abrasions. (MHA)

Provenance: Sanziany Collection & Rasumofsky Palace



Čís. Položky 2

A tapestry, Mary-Ann Williams *,

Vyvolávací cena:

EUR 3.200,-

woven carpet made of red felt pieces mounted on a rectangular panel. Dimensions: height c. 180 cm, width c. 150 cm. Slight signs of age and use. (MHA)

Mary-Ann Williams was born in Cape Town, South Africa. She studied interior design, fashion, hat, pattern and textile design in Cape Town and Hamburg. As an interior designer, she made a name for herself as the ‘Queen of Felt’. She has been the recipient of more than 20 awards and prizes.



Čís. Položky 3

An “Anemone Chair”, designed by Fernando & Humberto Campana,

Dosažená cena:

EUR 2.400,-

Vyvolávací cena:

EUR 2.000,-

2001, for Edra, Italy, mould-pressed, satined and silver-metallic coloured metal, pink PVC tubes, hand-rolled, height c. 65 cm, width c. 120 cm, depth c. 90 cm, height of seat c. 38 cm. Slight signs of age and use, scratches and abrasions. (MHA)

Lit.: Antibodies - Fernando & Humberto Campana 1989 – 2009, Vitra Design Museum, Weil am Rhein 2009, p. 58, p. 116 - D Alfred, Campana Brothers, Complete Works (So Far), New York 2010, p. 30, p. 138, p. 264. Provenance: Sanziary Collection & Rasumofsky Palace



Čís. Položky 4

A Flap Sofa Sky Kiss, designed by Francesco Binfare,

Vyvolávací cena:

EUR 3.000,-

2000 / 2009 Edra / Italy, satin-finished and chromium plated metal frame, polyurethane foam upholstery, dark textile covering. Dimensions: length c. 355 cm, depth c. 166 cm, height of seat c. 34 cm. Signs of age and wear, scratches and abrasions. (MHA)



Čís. Položky 5

A “Biomega MNo1” city bike, designed by Marc Newson

Dosažená cena:

EUR 2.200,-

Vyvolávací cena:

EUR 2.000,-

1999/2000, for Biomega, Copenhagen/Denmark, aluminium frame, carbon fork, Rohloff 14-speed gears, length 173 cm. Slight signs of age and use, scratches and abrasions. (MHA)



Čís. Položky 6

A lounge chair from the 3D series, designed by Komplot Design (Poul Christiansen and Boris Berlin)

Vyvolávací cena:

EUR 300,-

2003, for Gubi, sculptural construction with runner-shaped support made of chromium plated steel, upholstered seat shell made of HiRek (polypropylene) covered with grey wool fabric of the Wiener Werkstätte. Dimensions: height c. 69 cm, width c. 65 cm, depth c. 67 cm, height of seat c. 40 cm. Slight signs of age and use, scratches and abrasions. (MHA)



Čís. Položky 7

A 3-piece set of “Panorama” seating elements, designed by Emmanuel Babled

Vyvolávací cena:

EUR 1.300,-

2007, for Felice Rossi, Italy, freely combinable modular constructions made of chromium plated square tubes, polyurethane foam, set consisting of a corner element and two side seating elements. Dimensions of each elements: height c. 60 cm, width c. 78 cm, depth c. 78 cm, height of seat c. 35.5 cm. Signs of age and use, scratches and abrasions. (MHA)



Čís. Položky 8

A hanging light mod. Amax XXL, designed by Charles Williams

Dosažená cena:

EUR 300,-

Vyvolávací cena:

EUR 300,-

2003, for Fontana Arte, Italy, construction with cylindrical, slightly conical lampshade made of white polyethylene, chromium plated metal mount, wired for one light. Dimensions: height c. 90 cm, diameter c. 90 cm. Signs of age and use, scratches and abrasions, without guarantee for electrical fitting. (MHA)



Čís. Položky 9

A “Silencio” high-back chair mod. S 1804, designed by Porsche Design

Vyvolávací cena:

EUR 1.500,-

2001, for Interstuhl/Germany, Tecno/Italia version, metal stand, blue leather, interior lighting, height 150 cm, width 65 cm, depth 89 cm, height of seat 50 cm. Slight signs of age and use, scratches and abrasions, without guarantee for electrical fitting. (MHA)

The “Silencio” model was used in 2003 in the check-in area of the new Stuttgart Airport, among other places. Provenance: Sanziany Collection & Rasumofsky Palace



Čís. Položky 10

A hanging lamp “Of Movement and Material”, designed by Phillip Weber,

Vyvolávací cena:

EUR 3.200,-

for ANALOG, Berlin/Germany 2019, blown moulded glass, opaline white, aluminium, steel cable, signed, three glass elements: 19 x 21 cm, 16 x 17 cm, 18.5 x 16 cm. Slight signs of age and use, scratches and abrasions, without guarantee for electrical fitting. (DRAX)

A unique item. With certificate. During the design process of his lamp series ‘Of Movement and Material’, designer Philipp Weber dealt with the meaning of the relationship between man and material, wondering whether a craft such as glassmaking can be rethought in times of digitalisation. The glass bodies are created during a glassmaker’s rhythmic dance with his material. Their amorphous forms capture the moment of creation, freeze a liquid aggregate state and tell a poetic story of artistic creation. This “frozen” moment shines in opaque light. Today, only a few product developments are still based on years of research into materials, craftsmanship and form. The lamps are produced by the Berlin label ‘ANALOG’. They are among a few special objects resulting from a designer’s primary interest in the ‘process’ of creation.



Čís. Položky 11

Two armchairs, c. 2000,

Vyvolávací cena:

EUR 2.000,-

classic, pared-down, upholstered, cubic wood frame construction, lacquered metal base frame, dark blue textile covering. Dimensions of each armchair: height c. 68 cm, width c. 70 cm, depth c. 90 cm, height of seat c. 42 cm. Signs of age and use, scratches and abrasions. (MHA)



Čís. Položky 12

An “Axiome Chair”, designed by Thomas Feichtner

Vyvolávací cena:

EUR 2.000,-

2006, manufactured by Designwerkstätte Schatzl, Austria. A three-legged construction made of laser-cut, bent and powder-coated aluminium, height c. 88 cm, width c. 52 cm, depth c. 50 cm, height of seat c. 48.5 cm. Slight signs of age and use, scratches and abrasions (MHA)

Number 6 from an edition of 10 examples. One example is preserved in the collection of the Museum of Applied Arts (MAK) in Vienna. Exhibited (selection): - Triennale di Milano, 2006 - Aximnoe, MAK Vienna, 2007. Lit.: Once Upon a chair. - P. Noever, Thomas Feichtner, Edge to Edge, Basel 2010, pp. 224- 241 Provenance: From the property of the artist; Sanziany Collection & Rasumofsky Palace.



Čís. Položky 13

A “Gülde” chair, Alfred Burzler & Thomas Exner,

Vyvolávací cena:

EUR 900,-

Vienna 2003, “Stadthallenstuhl” by Roland Rainer, designed in 1951, four-legged construction made of solid beechwood and beech plywood, hammered metal, signed: 2003/Burzler/Thomas Exner. Dimensions: height c. 86 cm, width c. 43.5 cm, depth c. 57 cm, height of seat c. 44.5 cm. Slight signs of age and use, scratches and abrasions. (MHA)

Unique piece for the exhibition “Stapelbarer Serienstuhl Gülde zum 50. Geburtstag eines österreichischen Designklassikers”, Soho in Ottakring, Vienna, 2003. Provenance: Sanziany Collection & Rasumofsky Palace



Čís. Položky 14 +

A “Pattern” coffee table, designed by Sakura Adachi,

Vyvolávací cena:

EUR 3.000,-

2017, for Extroverso, Italy, stainless steel base, three tops in different shapes and designs: oval table, white marble, height 40 cm, 80 x 50 cm; hexagonal table covered with natural colour goatskin, height 30 cm, 90 x 50 cm; rectangular table made of wood, height 35 cm, 85 x 50 cm. (DRAX)

The three table elements can be arranged in a variety configurations.



Čís. Položky 15 +

A large “Loto” wall mirror, designed by Giannella Ventura,

Vyvolávací cena:

EUR 2.800,-

2012, for Tura, Italy, wooden frame covered with goatskin, sand-coloured, matt lacquered, 230 x 105 cm, depth 5 cm. (DRAX)



Čís. Položky 16 +

A sideboard, designed by Giannella Ventura,

Vyvolávací cena:

EUR 5.000,-

2012, for Tura, Italy, wooden corpus, covered with goat skin, sand-coloured, matt lacquered, height 72 cm, length 300 cm, depth 38 cm. (DRAX)



Čís. Položky 17 +

A pair of “Cavatappi” side tables, designed by Giannella Ventura,

Vyvolávací cena:

EUR 3.000,-

2015, for Tura, Italy, stainless steel, polished, wooden corpus, covered with goatskin, tobacco-coloured, clear lacquered, height 60 cm, diameter 60 cm. (DRAX)



Čís. Položky 18 +

A coffee table, Tura, Italy

Vyvolávací cena:

EUR 2.800,-

1980s, wooden corpus, covered with goatskin, tobacco-coloured, matt lacquered, height 35 cm, 130 x 80 cm. (DRAX)



Čís. Položky 19

An extravagant serving trolley, Aldo Tura,

Vyvolávací cena:

EUR 1.600,-

Italy c. 1960, wooden corpus covered with parchment, light-coloured, lacquered, amber-coloured handles, glass plate, brass, on two wheels, three oval trays with glass shelves, height c. 89 cm, length c. 100 cm, width c. 63 cm. Slight signs of age and use, scratches and abrasions. (MHA)



Čís. Položky 20

A table, Aldo Tura

Vyvolávací cena:

EUR 2.600,-

, Italy c. 1980, cuboid wooden corpus and square table top, covered with violet dyed parchment, lacquered, height c. 66.5 cm, width c. 141 cm, depth c. 141 cm Slight signs of age and use, scratches and abrasions. (MHA)



Čís. Položky 21 +

A “Pink Leather Chair”, designed and manufactured by Nawaaz Salkulker, South Africa

Vyvolávací cena:

EUR 600,-

2017, frame made of epoxy resin-coated round steel, wickerwork made of leather straps, oak armrests, height c. 88 cm, width c. 75 cm, depth c. 52 cm, seat height c. 42 cm. (DRAX)

From the “A Line Is Unique” series. Number 1/1



Čís. Položky 22 +

A “Cubist Book Shelf”, designed and manufactured by Nawaaz Salkulker

Vyvolávací cena:

EUR 1.500,-

2017, metal frame, paper, used Nespresso capsules in gold and copper tones, height c. 69 cm, width c. 52 cm, depth c. 17 cm. (DRAX)

Part of the “Tomorrow’s Silver” Collection. A unique item.



Čís. Položky 23 +

An “Into the Meadows” tapestry, designed and manufactured by Nawaaz Saldulker, Cologne

Vyvolávací cena:

EUR 1.500,-

2028, handmade from recycled wool, c. 120 x 112 cm. (DRAX)

From the “Animale” project on the subject of sustainable use of materials as a reference to nature. Number 1/1.



Čís. Položky 24 +

A Silhouette Mirror, designed by Nawaaz Saldulker, manufactured by Collective United Colours of Design, Milan

Vyvolávací cena:

EUR 300,-

2022, old glass, mirror, diameter 30 cm. (DRAX) A unique piece.



Čís. Položky 25 +

A “Six Masters Tea Table”, designed and manufactured by Collective United Colours of Design, Amsterdam

Vyvolávací cena:

EUR 600,-

2023, oak, Dutch blue and white tiles, foldable, height c. 32.5 cm, c. 24 x 35 cm. (DRAX)

A unique item.



Čís. Položky 26 +

A “Flower Hexagonal Bowl”, designed by Nawaaz Saldulker,

Vyvolávací cena:

EUR 600,-

manufactured by Collective United Colours of Design, Milan 2022, old glass, diameter 28 cm, height 20 cm. (DRAX)

A unique item.



Čís. Položky 27

A unique sculpture, manufactured by Johann Rumpf

Dosažená cena:

EUR 900,-

Vyvolávací cena:

EUR 900,-

2013, the penguin itself was designed by the sculptor Gerold Kubitschek in 2012. Painted by the artist Johann Rumpf with lightfast colours and preserved with epoxy resin. Signed and dated. Dimensions: height c. 39 cm, width c. 32 cm, depth c. 25 cm. Slight signs of age and use. (MHA)

A unique item. Johann Rumpf was born in Vienna on 7 April 1950. 1970 – 1974: worked for the enamel jewellery company Michaela Frey in Vienna; 1973 - 1974: children' art supervisor at the “Wiener Ferienspiel” and organiser of painting courses in Vienna; 1976: licence for artistic screen printing; 1976: member of the Professional Association of Austrian Fine Artists; foundation of the artisan company Johann Rumpf with a focus on glass painting; 1977 - 1992: various exhibitions in Austria and abroad (Vienna, Salzburg, Munich, Frankfurt, New York, etc.); 1992 - 1993: construction of the Kunsthaus Rumpf; 1994 - 2020: various exhibitions and art auctions. Objects by Johann Rumpf are preserved in various museums and renowned collections such as Barbier-Mueller. Johann Rumpf lives and works in Vienna.



Čís. Položky 28

A unique high-back chair 'For The Big BOSS', designed and manufactured by Johann Rumpf

Vyvolávací cena:

EUR 2.000,-

2020, four legs, modified construction made of polychrome lacquered wood, with acrylic paint and lightfast furniture varnishes. Height c. 178 cm, width c. 61 cm, depth c. 47 cm. Slight signs of age and use. (MHA)

A unique item. Johann Rumpf was born in Vienna on 7 April 1950. 1970 – 1974: worked for the enamel jewellery company Michaela Frey in Vienna; 1973 - 1974: children' art supervisor at the "Wiener Ferienspiel" and organiser of painting courses in Vienna; 1976: licence for artistic screen printing; 1976: member of the Professional Association of Austrian Fine Artists; foundation of the artisan company Johann Rumpf with a focus on glass painting; 1977 - 1992: various exhibitions in Austria and abroad (Vienna, Salzburg, Munich, Frankfurt, New York, etc.); 1992 - 1993: construction of the Kunsthau Rumpf; 1994 - 2020: various exhibitions and art auctions. Objects by Johann Rumpf are preserved in various museums and renowned collections such as Barbier-Mueller. Johann Rumpf lives and works in Vienna.



Čís. Položky 29

A unique floor lamp mod. 'It's all go', designed and manufactured by Johann Rumpf

Vyvolávací cena:

EUR 1.000,-

2024, modified construction consisting of various everyday objects made of, inter alia, acrylic glass, plastic, metal and glass rods, handcrafted by the artist using various materials and techniques and reassembled. Signed. Height c. 175 cm, width c. 30 cm, depth c. 34 cm. Slight signs of age and use, without guarantee for electrical fitting. (MHA)

A unique piece. Johann Rumpf was born in Vienna on 7 April 1950. 1970 – 1974: worked for the enamel jewellery company Michaela Frey in Vienna; 1973 - 1974: children' art supervisor at the "Wiener Ferienspiel" and organiser of painting courses in Vienna; 1976: licence for artistic screen printing; 1976: member of the Professional Association of Austrian Fine Artists; foundation of the artisan company Johann Rumpf with a focus on glass painting; 1977 - 1992: various exhibitions in Austria and abroad (Vienna, Salzburg, Munich, Frankfurt, New York, etc.); 1992 - 1993: construction of the Kunsthaus Rumpf; 1994 - 2020: various exhibitions and art auctions. Objects by Johann Rumpf are preserved in various museums and renowned collections such as Barbier-Mueller. Johann Rumpf lives and works in Vienna.



Čís. Položky 30

A 14-piece drink set, for Venini,

Dosažená cena:

EUR 600,-

Vyvolávací cena:

EUR 600,-

Murano 1990, set consisting of six water glasses, six small bowls, jug and bottle with stopper made of transparent, light green tinted glass. The underside marked with engraved inscription: 'Venini 86', 'Venini 87' and 'Venini 90'. Dimensions of each item: height of bottle with stopper c. 32 cm, jug c. 17 cm, glasses each c. 11.5 cm, 4 bowls height c. 6.5 cm each ('Venini 86'), 2 bowls height c. 6 cm each ('Venini 87'), slight signs of age and use, scratches and abrasions, one bowl with deeper scratches / slight chipping to the side. (MHA)



Čís. Položky 31

A glass sculpture in the shape of an egg, for Venini,

Dosažená cena:

EUR 420,-

Vyvolávací cena:

EUR 200,-

Murano 1990, clear glass internally decorated with blue and green diagonal stripes, marked on the underside with engraved lettering: 'Venini 90'. Dimensions: height c. 17 cm. Slight signs of age and use, scratches and abrasions. (MHA)



Čís. Položky 32

A 13-piece drink set, for Venini,

Dosažená cena:

EUR 1.200,-

Vyvolávací cena:

EUR 600,-

Murano 1990, set consisting of 12 juice glasses and a jug made of slightly yellow-tinted clear glass with a red-tinted hexagonal opening. The underside marked with engraved inscription 'Venini 90' and the jug with adhesive label on the side. Dimensions of each item: height c. 23 cm / 14 cm. Slight signs of age and use, scratches and abrasions. (MHA)



Čís. Položky 33

A "Mizari" vase, Carlo Moretti, 2011,

Dosažená cena:

EUR 240,-

Vyvolávací cena:

EUR 240,-

Murano, Italy, sculptural construction made of thick-walled clear glass with narrow opening, the side with applied horizontal blue and turquoise bands, adhesive label: MADE IN ITALY, carlo moretti. With scratched signature. Dimensions: height c. 25 cm. With certificate of authenticity. No. 77 from the limited edition of 222 examples. Slight signs of age and use especially to the cardboard. (MHA)



Čís. Položky 34

A "Giose" vase, Carlo Moretti, 2008,

Dosažená cena:

EUR 260,-

Vyvolávací cena:

EUR 200,-

Murano, Italy, sculptural construction made of thick-walled clear glass with narrow opening, the side with applied horizontal red bands, adhesive label: MADE IN ITALY, carlo moretti. With scratched signature. Dimensions: height c. 20 cm, diameter c. 15 cm. In original box. With certificate of authenticity. No. 140 from the limited edition of 333 examples. Slight signs of age and use especially to the cardboard. (MHA)



Čís. Položky 35

A large Murano chandelier, for Baglioni Spa Hotel Budapest,

Dosažená cena:

EUR 20.000,-

Vyvolávací cena:

EUR 20.000,-

2006, modular construction made of cylindrical cullet elements. The set includes different sizes, which can be connected with a strong, load-bearing steel cable through the centre of the Murano glass cylinders and secured in any modular way and length. Each glass cylinder has its own mechanism allowing height and distance adjustment to other adjacent glass elements. Each glass cylinder is equipped with a high-quality automatic cable clamp with safety device. This dynamic locking system is the ideal solution to change the position of the glass tubes with great simplicity and speed. It also allows the user to change the length of the steel cables attached to the ceiling. This chandelier is the ideal solution for high stairs, and can also be used in any other project. The set comprises: 50 large Murano glass tubes, height c. 50 cm each, diameter c. 9 cm each; 250 medium-sized Murano glass tubes, height c. 25 cm each, diameter c. 6 cm each; 250 small Murano glass tubes, height c. 18 cm each, diameter c. 4 cm each. Slight signs of age and use, scratches and abrasions, disassembled, without guarantee for electrical fitting and completeness. (MHA)

This chandelier was designed in 2006 for the Baglioni Spa Hotel in Budapest. Building works for this famous 5-star hotel commenced in October 2006 and were completed 5 years later, in September 2011. The hotel and the banquet hall was attached to the 'Racz Baths', which date back to the 16th century and are a UNESCO World Heritage Site. Provenance: Originally part of the interior of the Baglioni Spa Hotel in Budapest.



Čís. Položky 36

A "Loom" chaise longue, designed by Ross Lovegrove

Vyvolávací cena:

EUR 1.200,-

1999, for Lloyd Loom/GB, aluminium, paper cord braid, black leather, metal plaque: LOOM TM/0100115/by ROSS LOVEGROVE, dimensions: height c. 85 cm, width c. 80 cm, length c. 220 cm. Slight signs of age and use, scratches and abrasions (MHA)

An early model. Lightweight, self-supporting furniture without the traditional frame construction. Provenance: Sanziany Collection & Rasumofsky Palace



Čís. Položky 37

Artemide Logico hanging light mod. Logico 3 x 120, designed by Michele De Lucchi

Dosažená cena:

EUR 600,-

Vyvolávací cena:

EUR 600,-

for Artemide, Italy, construction with three-part diffuser made of mouth-blown opalescent glass, synthetic material, wired for three lights. Dimensions: width c. 66 cm, depth c. 66 cm, height of diffuser c. 31 cm. Signs of age and use, scratches and abrasions, without guarantee for electrical fitting. (MHA)



Čís. Položky 38

A folding table mod. Battista, designed by Romeo Sozzi,

Dosažená cena:

EUR 420,-

Vyvolávací cena:

EUR 400,-

c. 1990 for Promemoria, folding construction with black lacquered wooden support and cherrywood table top. Dimensions: height c. 58 cm, size of table top c. 63 cm x 48 cm. Slight signs of age and use, scratches and abrasions. (MHA)



Čís. Položky 39

Two wall lamps mod. Tolomeo Mega, designed by Giancarlo Fassina & Michele De Lucchi,

Dosažená cena:

EUR 400,-

Vyvolávací cena:

EUR 400,-

for Artemide, Italy, adjustable metal constructions, each with a cylindrical, slightly pointed lampshade, wired for one light (E27 socket). Dimensions of each item: max. height c. 200 cm, max. depth c. 100 cm. Signs of age and use, scratches and abrasions, without guarantee for electrical fitting. (MHA)



Čís. Položky 40

A three-tiered Ellipse Tower 17, designed by Greutmann-Bolzern & Benny Mosimann

Dosažená cena:

EUR 800,-

Vyvolávací cena:

EUR 800,-

1996, for WOGG, on castors, three-tiered construction with elliptical base made of black melamine, anodized aluminium and glass surfaces. Dimensions: height c. 114 cm, width c. 65 cm, depth c. 49 cm. Slight signs of age and use, scratches and abrasions. (MHA)



Čís. Položky 41

A “Chaise Marie Antoinette”, designed by Eric Schmitt *, Edition En Attendants les Barbares Studio

Vyvolávací cena:

EUR 2.000,-

for Wunderhaus, Munich, France 1990s, bronze, stamped: 30/50, dimensions: height c. 104 cm, width c. 60 cm, depth c. 60 cm, height of seat c. 49 cm. Slight signs of age and use, scratches and abrasions (MHA)

Number 30 from the limited series of 50 specimens. Provenance: Wunderhaus, Munich, family ownership; Sanziany Collection & Palais Rasumofsky



Čís. Položky 42

A table lamp mod. 'Lucellino', designed by Ingo Maurer

Dosažená cena:

EUR 380,-

Vyvolávací cena:

EUR 150,-

1992, for Design M, figural construction made of glass, brass, plastic and goose feathers, height c. 26 cm. Slight signs of age and use, scratches and abrasions, without guarantee for electrical fitting. (MHA)



Čís. Položky 43

A pendant, Friedrich Schmollgruber, Austria

Dosažená cena:

EUR 380,-

Vyvolávací cena:

EUR 300,-

c. 1990, gilt silver, granulation, smoky quartz, amazonite, two hallmarks, hallmarked Schmollgruber signet, gold chain, c. 2.2 x 4 cm. (DRAX)



Čís. Položky 44

A brooch,

Dosažená cena:

EUR 300,-

Vyvolávací cena:

EUR 300,-

Friedrich Schmollgruber, Österreich um 1990, Gold, gehämmert, Silber, patiniert, Opal, drei Punzen und gepunztes Schmollgruber Signet, Länge c. 14,8 cm (DRAX)

In original wooden box.



Čís. Položky 45

A floor lamp / light sculpture, B. R. A.
N. D.* (Rudolf Weber & Boris
Broschardt),

Vyvolávací cena:

EUR 1.000,-

Vienna, 1990, sculptural black varnished metal construction, wired for two lights. Height c. 190 cm, width at top c. 80 cm, depth at bottom c. 30 cm. Signs of age and use, scratches and abrasions, without guarantee for electrical fitting.



Čís. Položky 46

A red leather sofa, B. R. A. N. D.*
(Rudolf Weber & Boris Broschardt),

Vyvolávací cena:

EUR 2.000,-

Vienna, 1990, leather couch made of metal, hard cardboard and leather upholstery. Height c. 75 cm, width c. 206 cm, depth c. 70 cm. Signs of age and use, scratches and abrasions. (MHA)



Čís. Položky 47

A large Missoni Mandarin carpet, manufactured by T. & J. Vestor,

Vyvolávací cena:

EUR 1.500,-

Italy 1980s, woven virgin wool, with polychrome floral decoration, border with brightly coloured motif in a geometrical shape, manufacturer's label "Missoni by T. & J. Vestor", measurements: c. 165 cm x 240 cm. Slight signs of age and use. (MHA)



Čís. Položky 48

A lounge sofa, designed in around 1990, for De Sede,

Vyvolávací cena:

EUR 1.000,-

Switzerland, heavy sculptural upholstered wood frame construction, green leather covers, loose seat cushion with multicolour cover, marked in the underlying fabric with woven manufacturer logo and lettering. Dimensions: height c. 72 cm, width c. 140 cm, depth c. 70 cm. Slight signs of age and use, scratches and abrasions. (MHA)



Čís. Položky 49

A set of six dining chairs model B20, designed by Axel Bruchhäuser

Vyvolávací cena:

EUR 800,-

1981, for Tecta, Lauenförde, Germany, free-swinging constructions made of chromium plated tubular steel, seats made of braided synthetic material. Dimensions of each chair: height c. 89 cm, width c. 50 cm, depth c. 54 cm, height of seat c. 45 cm. Slight signs of age and use, scratches and abrasions, one chair with damaged wickerwork seat. (MHA)



Čís. Položky 50

A floor lamp mod. 'Thor Terra', designed by Luca Nichetto

Dosažená cena:

EUR 500,-

Vyvolávací cena:

EUR 500,-

c. 1980, for Foscarini, sculptural construction with slats made of red lacquered metal. Marked with label. Dimensions: height c. 183 cm, diameter c. 27 cm. Signs of age and use, scratches and abrasions, slight isolated deformations, without guarantee for electrical fitting. (MHA)



Čís. Položky 51

A large Missoni Arlequine carpet, manufactured by T. & J. Vestor,

Vyvolávací cena:

EUR 1.500,-

Italy 1980s, virgin wool, woven, with brightly coloured decoration reduced to basic geometric shapes, dark narrow border, manufacturer's label "Missoni by T. & J. Vestor", dimensions c. 165 cm x 240 cm. Slight signs of age and use. (MHA)



Čís. Položky 52

An early “Dr. Sonderbar” armchair, designed by Philippe Starck

Vyvolávací cena:

EUR 1.400,-

1983, for XO, Boissy Saint Leger/France, three-leg construction made of gold lacquered metal, height c. 63 cm, width c. 90 cm, depth c. 47 cm, height of seat c. 47 cm. Slight signs of age and use, scratches and abrasions (MHA)

Rare in this version. Provenance: Private collection Hamburg/Deutschland, 1989-2010; Sanziany Collection & Palais Rasumofsky



Čís. Položky 53

A large carpet after “Le Emigrants” by Asger Jorn,

Dosažená cena:

EUR 1.500,-

Vyvolávací cena:

EUR 1.500,-

manufactured by Ege Axminster / EgeArt Line, Denmark. Wool, abstract depiction in a dark shade on light-coloured ground. The reverse side with retailer label. Size c. 335 cm x 250 cm. Slight signs of age and use. (MHA)



Čís. Položky 55

An armchair mod. Progetti 63340, designed by Umberto Asnago

Dosažená cena:

EUR 700,-

Vyvolávací cena:

EUR 600,-

c. 1980, for Giorgetti, Italy, four-legged wood frame constructions, detachable anthracite coloured fabric spreads, inscribed with manufacturer's plaque. Dimensions of each armchair: height c. 90 cm, width c. 62 cm, depth c. 68 cm, height of seat c. 44 cm. Slight signs of age and use, scratches and abrasions. (MHA)



Čís. Položky 56

A large Missoni Sirio carpet, manufactured by T. & J. Vestor,

Vyvolávací cena:

EUR 1.500,-

Italy 1980s, virgin wool, woven, with brightly coloured patchwork-look decoration reduced to basic geometric shapes, manufacturer's label "Missoni by T. & J. Vestor", dimensions c. 165 cm x 240 cm. Slight signs of age and use. (MHA)



Čís. Položky 57

An armchair mod. Progetti 63340, designed by Umberto Asnago

Dosažená cena:

EUR 1.100,-

Vyvolávací cena:

EUR 500,-

c. 1980, for Giorgetti, Italy, four-legged wood frame constructions, detachable light-coloured coloured fabric spreads, inscribed with manufacturer's plaquette. Height c. 65 cm, width c. 80 cm, depth c. 75 cm, height of seat c. 40 cm. Slight signs of age and use, scratches and abrasions. (MHA)



Čís. Položky 58

A table lamp mod. Pausania, designed by Ettore Sottsass

Dosažená cena:

EUR 500,-

Vyvolávací cena:

EUR 500,-

1983, for Artemide, Italy, construction reduced to basic geometric shapes made of black and green synthetic material, chromium plated metal tube and green lacquered perforated sheet iron. Fitted for electricity. Marked with manufactory label. Dimensions: height c. 42, width c. 48 cm, depth c. 11 cm. Slight signs of age and use, scratches and abrasions, without guarantee for electrical fitting. (MHA)



Čís. Položky 60

A large Missoni carpet, manufactured by T. & J. Vestor,

Vyvolávací cena:

EUR 1.500,-

Italy, virgin wool, woven, with geometrical decoration, manufacturer's label "Missoni by T. & J. Vestor", dimensions c. 165 cm x 240 cm. Slight signs of age and use. (MHA)



Čís. Položky 61

A teapot with tea strainer, designed by David Palterer

Vyvolávací cena:

EUR 2.400,-

1987, for Cleto Munari, Italy, futuristic constructions made of solid sterling silver with a solid teak wood handle. Marked with purity mark, signet and numbered '13/99'. Dimensions: height c. 13 cm, width c. 27 cm, depth c. 18 cm. Slight signs of age and use, scratches and abrasions. (MHA)

Cf. Lit.: Il Tesoro Dell'Architettura: Cleto Munari 1980/1990, ed. Vezzosi, p.75



Čís. Položky 62

A set of four wall lamps mod. Icaro, designed by Carlo Forcolini

Vyvolávací cena:

EUR 500,-

c. 1980, for Artemide, Italy, sculptural construction with casing made of grey metallic lacquered metal, lampshade made of crystal glass with polished, chromium plated steel. Dimensions of each element: height c. 25 cm, width c. 28 cm, depth c. 17 cm. Slight signs of age and use, scratches and abrasions, without guarantee for electrical fitting. (MHA)



Čís. Položky 59

A lidded vase no 19/20, designed by Ettore Sottsass

Dosažená cena:

EUR 2.000,-

Vyvolávací cena:

EUR 2.000,-

1959, manufactured by Giovanni Masoni, Italy, 2001, sculptural construction made of polychrome glazed ceramic. The underside inter alia with monogram, date, indication of place and numbered. Dimensions: height c. 19 cm, diameter c. 15 cm. Slight signs of age and use. (MHA)

No. 3 from the limited edition of 20 examples. With certificate of authenticity.



Čís. Položky 65

A brown leather lounge sofa for Niels Eilersen,

Vyvolávací cena:

EUR 600,-

Denmark, second half of the 20th century, four legs, upholstered wood frame construction, brown leather cover. The underlying fabric marked with large manufacturer's logo and lettering. Dimensions: height c. 77 cm, width c. 190 cm, depth c. 80 cm, height of seat c. 44 cm. Signs of age and use, scratches and abrasions, slight patina. (MHA)



Čís. Položky 54

A set of six armchairs mod. Progetti 63340, designed by Umberto Asnago

Dosažená cena:

EUR 9.000,-

Vyvolávací cena:

EUR 3.600,-

c. 1980, for Giorgetti, Italy, four-legged wood frame constructions, detachable light-coloured coloured fabric spreads, inscribed with manufacturer's plaque. Dimensions of each armchair: height c. 90 cm, width c. 62 cm, depth c. 68 cm, height of seat c. 44 cm. Slight signs of age and use, scratches and abrasions. (MHA)



Čís. Položky 66

A “Wink” armchair, designed by Toshiyuki Kita

Vyvolávací cena:

EUR 500,-

, 1976 - 1980, for Cassina, Milan/ Italy, adjustable steel frame, upholstered with polyurethane foam, spread and covering made of black fabric with polychrome decoration. Dimensions: height c. 100 cm, width c. 80 cm, length c. 90 cm, opened as chaise longue: length c. 160 cm. Signs of age and use, scratches and abrasions, covering slightly faded in places. (MHA)

Cf. Lit.: Ch. & P. Fiell, 1000 chairs, 1997, p. 554



Čís. Položky 67

A large Missoni carpet, manufactured by T. & J. Vestor,

Vyvolávací cena:

EUR 1.500,-

Italy 1980s, virgin wool, woven, with brightly coloured decoration reduced to basic geometric shapes, dark narrow border, manufacturer's label, dimensions c. 165 cm x 240 cm. Slight signs of age and use (MHA)



Čís. Položky 68

A coffee table, Axel Vervoordt, Belgium c. 1980

Dosažená cena:

EUR 800,-

Vyvolávací cena:

EUR 800,-

(attributed), classic, pared-down construction with rectangular table top, made from a combination of wenge wood and bamboo. Dimensions: height c. 40 cm, width c. 130 cm, depth c. 100 cm. Slight signs of age and use, scratches and abrasions. (MHA)



Čís. Položky 69

An animal-shaped stool object (dog),

Dosažená cena:

EUR 1.600,-

Vyvolávací cena:

EUR 1.200,-

last third of the 20th century, four-legged structure in the form of a dog made of hand-sewn patinated brown leather. Dimensions: height c. 42 cm, length c. 70 cm, width c. 26 cm. Slight signs of age and use, scratches and abrasions, slight patina. (MHA)



Čís. Položky 70

An animal-shaped stool object (elephant),

Dosažená cena:

EUR 2.000,-

Vyvolávací cena:

EUR 1.200,-

last third of the 20th century, four-legged structure in the form of an elephant made of hand-sewn patinated brown leather. Dimensions: height c. 45 cm, length c. 66 cm, width c. 30 cm. Slight signs of age and use, scratches and abrasions, slight patina. (MHA)



Čís. Položky 63

A coffee machine, Duchessina, Italy, second half of the 20th century,

Dosažená cena:

EUR 2.600,-

Vyvolávací cena:

EUR 300,-

four-legged construction made of chromium plated metal, with container. Dimensions: height c. 115 cm, width c. 45 cm, depth c. 55 cm. Signs of age and use, scratches and abrasions, some residues, without guarantee for electrical fitting and completeness. (MHA)



Čís. Položky 71

A coffee table mod. Alveo, designed by Willy Rizzo

Dosažená cena:

EUR 800,-

Vyvolávací cena:

EUR 800,-

1972, for Mario Sabot, sculptural construction with rectangular base, all-round burlwood veneer, square tabletop, with bar compartment in the centre and brass corner details. Dimensions: height c. 35 cm, width c. 120 cm, depth c. 120 cm. Signs of age and use, scratches and abrasions. (MHA)



Čís. Položky 64

A carpet after a design by Jean-Charles de Castelbajac

Dosažená cena:

EUR 1.600,-

Vyvolávací cena:

EUR 1.000,-

c. 1985, for Tai Ping Carpets, c. 1985, tufted wool, polychrome decoration on light-coloured ground, inscribed 'your nose', 'your ear', 'your hair' and 'your lips' on the side and with a woven signature: JJC, verso with manufactory label. Dimensions c. 200 x 200 cm. Signs of age and use, scratches and abrasions. (MHA)



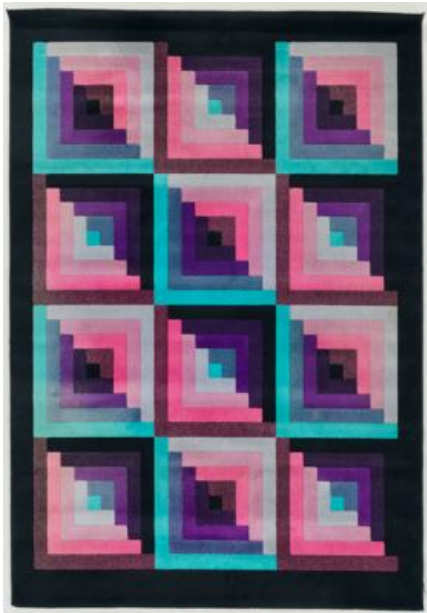
Čís. Položky 72

A table lamp, Willy Daro, Belgium,

Vyvolávací cena:

EUR 1.000,-

second half of the 20th century, sculptural construction in the shape of an abstract owl with brass head and foot, coral body, cylindrical lamp shade. Dimensions: lamp height c. 57 cm, owl height c. 25 cm, owl width c. 13.5 cm, lampshade top diameter c. 24 cm, bottom diameter c. 36 cm, lampshade height c. 23 cm, base size: height c. 3.5 cm, width c. 11 cm, depth c. 11 cm. Slight signs of age and use, scratches and abrasions, without guarantee for electrical fitting. (MHA)



Čís. Položky 73

A large Missoni Posado carpet, manufactured by T. & J. Vestor,

Vyvolávací cena:

EUR 1.500,-

Italy 1980s, virgin wool, woven, with brightly coloured decoration reduced to basic geometric shapes, dark narrow border, manufacturer's label "Missoni by T. & J. Vestor", dimensions c. 165 cm x 240 cm. Slight signs of age and use. (MHA)



Čís. Položky 74

Two side tables, Etienne Fermigier,

Vyvolávací cena:

EUR 500,-

France c. 1970, four-legged structures made of chromium plated metal, rectangular table tops with rounded corners made of smoky dyed glass. Dimensions of each item: height c. 39 cm, width c. 60 cm, depth c. 52 cm. Slight signs of age and use, scratches and abrasions. (MHA)



Čís. Položky 75

Two side tables, designed by Giovanni Banci,

Dosažená cena:

EUR 2.600,-

Vyvolávací cena:

EUR 2.000,-

c. 1970, for Hermes, classic, pared-down, four-legged structure in neo-classical design with cross-shaped strutting, supported at the centre by a ring made of gold-coloured patinated metal, square-shaped table top made of clear glass. Dimensions of each element: height c. 42 cm, width c. 60 cm, depth c. 60 cm. Slight signs of age and use, scratches and abrasions. (MHA)



Čís. Položky 77

A large Missoni Maschere carpet, manufactured by T. & J. Vestor,

Dosažená cena:

EUR 1.500,-

Vyvolávací cena:

EUR 1.500,-

Italy 1980s, virgin wool, woven, with polychrome decoration featuring diverse faces / masks, outlined by a dark border, manufacturer's label "Missoni by T. & J. Vestor", dimensions c. 165 cm x 240 cm. Slight signs of age and use. (MHA)



Čís. Položky 78

A large coffee table, Giovanni Banci,

Vyvolávací cena:

EUR 2.000,-

c. 1970, for Hermes, classic, pared-down, four-legged structure with curved support made of gold-coloured metal, rectangular table top, height c. 42 cm, length c. 130 cm, depth c. 75 cm. Slight signs of age and use, scratches and abrasions. Slight signs of age and use. Scratches and abrasions. (MHA)



Čís. Položky 79

A large table lamp / floor lamp, Banci,

Vyvolávací cena:

EUR 1.400,-

Italy, second half of the 20th century, classic, pared-down construction with mushroom-shaped lamp shade and shaft made of brass and copper, with crystal ball finial at top. Dimensions: height c. 70 cm, diameter c. 50 cm. Slight signs of age and use. Scratches and abrasions, without guarantee for electrical fitting. (MHA)



Čís. Položky 80

A large coffee table, designed by Giovanni Banci,

Dosažená cena:

EUR 2.800,-

Vyvolávací cena:

EUR 2.000,-

c. 1970, for Hermes, classic, pared-down, four-legged structure in neo-classical design with cross-shaped strutting, supported at the centre by a ring made of gold-coloured patinated metal, rectangular table top made of clear glass. Dimensions: height c. 42 cm, length c. 125 cm, depth c. 60 cm. Slight signs of age and use, scratches and abrasions. (MHA)



Čís. Položky 81

A rare, early floral table lamp, designed by Chrystiane Charles

Vyvolávací cena:

EUR 3.600,-

c. 1960, for Maison Charles, sculptural, floral construction made of solid brass, on a cubic basis, wired for one light (E-14 socket), signed on a leaf: 'C. Charles'. Height c. 40 cm, width c. 35 cm, depth c. 30 cm. Slight signs of age and use. Scratches and abrasions, without guarantee for electrical fitting. (MHA)

An early model.



Čís. Položky 82

A magnificent, over-sized chandelier, Alfredo Barbini,

Vyvolávací cena:

EUR 4.000,-

Italy, last third of the 20th century, mounting and frame made of gold-coloured metal, with multiple glass hangings made of clear glass with murrine, wired for 10 lights, marked with manufacturer's adhesive label. Dimensions: height c. 60 cm, diameter c. 70 cm. Slight signs of age and wear. Scratches and abrasions, without guarantee for electrical fitting. (MHA)



Čís. Položky 83

Two table lamps for wall mounting in Hollywood Regency style, manufactured by Li Puma,

Vyvolávací cena:

EUR 500,-

Firenze, Italy, second half of the 20th century, sculptural construction made of turned wood, gold-coloured paintwork, lampshades with semi-circular diameter, wired for 1 light each. Marked with manufacturer's adhesive label on the underside. Dimensions: total height c. 52 cm each, height of each lamp shaft c. 37 cm, base diameter c. 13 cm. Signs of age and use, scratches and abrasions, small stains in places, one lamp shade slightly damaged, without guarantee for electrical fitting. (MHA)



Čís. Položky 76

A wall lamp, Hans Kögl, Germany,

Dosažená cena:

EUR 1.300,-

Vyvolávací cena:

EUR 500,-

1970s, sculptural floral wall lamp made of gold-leaf metal with blossoms and foliage, height c. 75 cm, width c. 120 cm, depth c. 20 cm. Signs of age and use, scratches and abrasions, without guarantee for electrical fitting. (MHA)



Čís. Položky 84

An artist's carpet 'Sundown', Ewald Kröner,

Vyvolávací cena:

EUR 1.000,-

Germany, c. 1970, pure virgin wool, hand-tufted. Dark blue ground with decoration of two semicircles in yellow, orange and red, the lower edge with woven signature 'Kröner'. Dimensions c. 160 x 160 cm. Signs of age and use. (MHA)



Čís. Položky 85

A magnificent chandelier mod. Triclinio, designed by Vico Magistretti

Dosažená cena:

EUR 3.400,-

Vyvolávací cena:

EUR 1.500,-

1967, for Artemide, Italy, nickel-plated brass construction, with six arms, wired for seven lights and seven opaque white glass diffusers, each with an inner sphere also made of opaque white glass. Dimensions: total diameter c. 120 cm, diameter of each diffuser c. 40 cm, total height c. 120 cm. Slight signs of age and use, scratches and abrasions, partly residues, central inner shade missing without guarantee for electrical fitting (MHA)

This chandelier was developed from the Clinio lamp designed in 1961, which became a modular design in 1967 with the Triclinio, the Pentaclinio and the Eptaclinio. Cf. Lit.: G. Gramigna, *Le fabbriche del Design*, Allemandi Editore, 2007, p. 36; G. Gramigna, *Repertorio del design italiano per l'arredamento domestico 1950- 2000*, ed. Umberto Allemandi & C., Turin, 2003, p. 91 (triclinio).



Čís. Položky 86

A set of three modular laundry bins / storage bins mod. 4984, designed by Anna Castelli Ferreri

Dosažená cena:

EUR 450,-

Vyvolávací cena:

EUR 450,-

c. 1970, for Kartell, Italy, box-shaped construction, front with handle and flap made of white synthetic material. With impressed mark on the underside. Dimensions of each element: height c. 56 cm, width c. 38 cm, depth c. 38 cm. Signs of age and use, scratches and abrasions. (MHA)



Čís. Položky 87

A large hanging lamp, School of Max Ingrand,

Vyvolávací cena:

EUR 3.000,-

Italy mid-20th century, futuristic construction made of chromium plated steel, transparent glass discs, fitted for multiple lights, diameter c. 60 cm, height c. 55 cm. Slight signs of age and use. Scratches and abrasions, without guarantee for electrical fitting. (MHA)



Čís. Položky 88

Two vases, Alfredo Barbini

Dosažená cena:

EUR 420,-

Vyvolávací cena:

EUR 300,-

c. 1965, cuboid shape, surface in the 'scavo' technique typical of Barbini, ochre-yellow-blue or amethyst-blue finish. Marked on the underside with etched signature: "Barbini Murano". Height c. 26 / 21 cm each. Slight signs of age and wear, partly with small scratches and minor partial abrasions. (MHA)



Čís. Položky 89

An aquarium, Gino Cenedese,

Dosažená cena:

EUR 650,-

Vyvolávací cena:

EUR 600,-

Murano, mid-20th century, large clear glass block, polychrome underwater landscape scene with seaweed and a fish between layers. Dimensions: height c. 13 cm, width c. 16 cm, depth c. 5 cm, weight c. 2 kg. Slight signs of age and use. (MHA)



Čís. Položky 92

A bottle with stopper 'Inciso', designed in 1956, executed by Venini & C,

Dosažená cena:

EUR 600,-

Vyvolávací cena:

EUR 400,-

Murano, Italy, 1989, overlaid glass, clear and smoke grey. Marked with transparent adhesive label 'Venini Murano Made in Italy' and engraved on the underside: 'Venini 89'. Dimensions: height c. 31 cm. Slight signs of age and use, partly with small scratches and minor partial abrasions. (MHA)



Čís. Položky 93

A bottle with stopper 'Inciso',
designed in 1956, executed by Venini
& C,

Dosažená cena:

EUR 550,-

Vyvolávací cena:

EUR 300,-

Murano, Italy, 1990, overlaid glass, clear and blue-violet. Marked with transparent adhesive label 'Venini Murano Made in Italy' and engraved on the underside: 'Venini 90'. Dimensions: height c. 18 cm. Slight signs of age and use, partly with small scratches and minor partial abrasions. (MHA)



Čís. Položky 90

A bottle with stopper 'Inciso',
designed in 1956, executed by Venini
& C,

Dosažená cena:

EUR 900,-

Vyvolávací cena:

EUR 500,-

Murano, Italy, 1990, overlaid glass, clear and brown. Marked with transparent adhesive label 'Venini Murano Made in Italy' and engraved on the underside: 'Venini 90'. Dimensions: height c. 40 cm. Slight signs of age and use, partly with small scratches and minor partial abrasions. (MHA)



Čís. Položky 91

A bottle with stopper 'Inciso',
designed in 1956, executed by Venini
& C,

Dosažená cena:

EUR 700,-

Vyvolávací cena:

EUR 400,-

Murano, Italy, 1990, overlaid glass, clear and orange. Marked with transparent adhesive label 'Venini Murano Made in Italy' and engraved on the underside: 'Venini 90'. Dimensions: height c. 28 cm. Slight signs of age and use, partly with small scratches and minor partial abrasions. (MHA)



Čís. Položky 95

A vase from the Anni Trenta series,
designed in around 1930,

Dosažená cena:

EUR 380,-

Vyvolávací cena:

EUR 300,-

manufactured by Venini, Italy 1989, glass vase in Soffiato Opalino technique, made of green glass with light green inner overlay, marked with adhesive label and engraved on the underside: 'Venini 89'. Dimensions: height c. 27.3 cm, bottom diameter c. 9 cm, top diameter c. 16 cm. Slight signs of age and use, partly with small scratches and minor partial abrasions. (MHA)



Čís. Položky 96

A vase, for Barovier & Toso, Murano,

Dosažená cena:

EUR 260,-

Vyvolávací cena:

EUR 200,-

second half of the 20th century, funnel-shaped construction in the form of a vase with round base made of black and yellow tinted glass. The underside with engraved lettering: 'barovier + toso murano', height c. 25.5 cm, diameter c. 16 cm. Slight signs of age and wear, partly with small scratches and minor partial abrasions. (MHA)



Čís. Položky 94

A bottle with stopper 'Inciso', designed in 1956, executed by Venini & C,

Dosažená cena:

EUR 800,-

Vyvolávací cena:

EUR 300,-

Murano, Italy, 1990, overlaid glass, clear and petrol green. Marked with transparent adhesive label 'Venini Murano Made in Italy' and engraved on the underside: 'Venini 90'. Dimensions: height c. 21 cm. Slight signs of age and use, partly with small scratches and minor partial abrasions. (MHA)



Čís. Položky 98

A carpet mod. Mira Romantica, designed by Verner Panton

Vyvolávací cena:

EUR 1.000,-

c. 1970 for Mira X, wool, rectangular, tufted field with a pattern of concentric squares in diverse shades of yellow, cognac and brown on cognac coloured ground. Dimensions c. 200 x 140 cm. Signs of age and use. (MHA)



Čís. Položky 97

A vase for Raymor Italy,

Dosažená cena:

EUR 360,-

Vyvolávací cena:

EUR 300,-

second half of the 20th century, cylindrical ceramic object with opening at top, polychrome glazed. Bottom marked 83 D 6 B Italy with an adhesive label Raymor 9512 B IT. Dimensions: height c. 41 cm. Slight signs of age and use, partly with small scratches and minor partial abrasions. (MHA)



Čís. Položky 101

Two vases 'Carnival', designed by Stig Lindberg

Vyvolávací cena:

EUR 300,-

1958 - 1962, for Gustavsberg Studio, cuboid and cylindrical construction made of white and polychrome glazed ceramic. Bottom with adhesive label Design Stig Lindberg and inscriptions Sweden 242. V. and G Sweden 230 - I. Dimensions: height c. 32 cm / 21 cm. Slight signs of age and wear, partly with small scratches and minor partial abrasions. (MHA)



Čís. Položky 99

Two vases, designed by Otto Brauer

Dosažená cena:

EUR 150,-

Vyvolávací cena:

EUR 150,-

c. 1960, for Holmegaard Glasvaerk, Copenhagen, Denmark, overlaid glass, clear, white and dark blue. Marked with factory labels. Dimensions of each item: height c. 29 cm / 25 cm. Slight signs of age and use, partly with small scratches and minor partial abrasions. (MHA)



Čís. Položky 103

A tripod coffee table, designed by Sven Ellekaer

Dosažená cena:

EUR 650,-

Vyvolávací cena:

EUR 500,-

c. 1960, for Christian Linneberg Möbelfabrik, Denmark, wooden construction with support and three legs, teak veneered, unattached round table top made of clear glass, dimensions: height c. 46 cm, diameter c. 100 cm. Slight signs of age and use, scratches and abrasions. (MHA)



Čís. Položky 100

A set of three vases from the “Korallenform” series, designed by Peter Müller

Dosažená cena:

EUR 300,-

Vyvolávací cena:

EUR 300,-

c. 1960, for Sgrafo Modern, Germany, coral-shaped sculptural constructions made of white glazed ceramic. The underside marked with stamp: 'Sgrafo Modern Germany'. Dimensions of mod. no. 2028 (object with handle): c. 19 cm, dimensions of mod. no. 2021 (figural object with two arms): height c. 20 cm; mod. no. 2008 (vase with two openings): height c. 15 cm. Slight signs of age and use, partly with small scratches and minor partial abrasions. (MHA)



Čís. Položky 105

A “Modus Easy” ensemble consisting of three armchairs and three side tables, designed by Kristian Solmer Vedel

Dosažená cena:

EUR 1.200,-

Vyvolávací cena:

EUR 1.200,-

1963, for Sören Willadsen, Denmark, four-legged constructions made of solid and veneered rosewood, upholstered, black leather seat and back covers. Marked with label. Dimensions of each chair: height c. 77 cm, width c. 71 cm, depth c. 61 cm, height of seat c. 38.5 cm; dimensions of each table: height c. 33 cm, width c. 55 cm, depth c. 55 cm. Slight signs of age and use, scratches and abrasions, slight patina. (MHA)

The present lot is subject to conservation legislation (ASB).



Čís. Položky 102

A “Harp Chair”, designed by Jorgen Hovelskov,

Dosažená cena:

EUR 1.500,-

Vyvolávací cena:

EUR 1.500,-

1968, for Christensen & Larsen Möbelhandwerk/Denmark, ash with a natural finish, nautical ropes, height 134 cm, depth 110 cm, width 104 cm, height of seat 40 cm. (DRAX)

The chair's curved leg shapes are reminiscent of Viking ships. Lit.: N. Oda, Danish Chairs, San Francisco 1999, p. 178



Čís. Položky 107

A “Modus Easy” ensemble consisting of two armchairs and a stool, designed by Kristian Solmer Vedel

Vyvolávací cena:

EUR 600,-

1963, for Sören Willadsen, Denmark, four-legged constructions made of solid and veneered rosewood, upholstered, black leather seat and back covers. Marked with label. Dimensions of each chair: height c. 77 cm, width c. 71 cm, depth c. 61 cm, height of seat c. 38.5 cm; dimensions of each table: height c. 33 cm, width c. 55 cm, depth c. 55 cm. Slight signs of age and use, scratches and abrasions, slight patina. (MHA)

The present lot is subject to conservation legislation (ASB).



Čís. Položky 104

A “Harp Chair”, designed by Jorgen Hovelskov,

Dosažená cena:

EUR 1.500,-

Vyvolávací cena:

EUR 1.500,-

1968, for Christensen & Larsen Möbelhandwerk / Denmark, ash with a natural finish, nautical ropes, height c. 134 cm, depth c. 110 cm, width c. 104 cm, height of seat c. 40 cm. Slight signs of age and use, scratches and abrasions (MHA)

The chair's curved leg shapes are reminiscent of Viking ships. Lit.: N. Oda, Danish Chairs, San Francisco 1999, p. 178 Provenance: Sanziany Collection & Rasumofsky Palace



Čís. Položky 108

A set of six hanging lamps “Flowerpot”, designed by Verner Panton

Dosažená cena:

EUR 600,-

Vyvolávací cena:

EUR 600,-

1968, for Louis Poulsen, metal, enamelled in orange and blue, arranged in cascade form, mounted on a ceiling plate, diameter of the ceiling plate c. 50 cm. Signs of age and use, scratches and abrasions, some isolated chipping to the enamel, without guarantee for electrical fitting. (MHA)

An early enamelled flowerpot version with porcelain mounts. Cf. Lit.: cat. Verner Panton, Vitra Design Museum Weil am Rhein, 2000, p. 93



Čís. Položky 110

A sofa table mod. Dollar, designed by Folke Ohlsson

Dosažená cena:

EUR 500,-

Vyvolávací cena:

EUR 300,-

c. 1960, for Tingströms Bra Bohag, Sweden, four-legged construction with rectangular rosewood tabletop. With manufacturer's brand mark. Dimensions: height c. 51 cm, length c. 160 cm, depth c. 60 cm. Signs of age and use, scratches and abrasions. (MHA)

The present lot is subject to conservation legislation (ASB).



Čís. Položky 112

A large sideboard, designed by Arne Hovmand Olsen

Dosažená cena:

EUR 1.600,-

Vyvolávací cena:

EUR 800,-

c. 1960, for Mogens Kold, box-shaped teak construction, the front with three drawers and four doors. Dimensions: height c. 71 cm, width c. 240 cm, depth c. 45 cm. Signs of age and use, scratches and abrasions. (MHA)



Čís. Položky 109

A sofa mod. 1001, designed by Sven Ivar Dysthe

Dosažená cena:

EUR 2.800,-

Vyvolávací cena:

EUR 800,-

c. 1960, for Dokka Möbler, Norway, classic, pared-down, four-legged structure in chromium plated metal and rosewood, upholstered, black leather cover, height c. 72 cm, width c. 180 cm, depth c. 75 cm, height of seat c. 43 cm. Slight signs of age and use, partly small scratches and minor abrasions, isolated minor chipping, partly slight traces of oxidation. (MHA)

Cf. Lit.: Trinelise Dysthe et al: Dysthe Design, Swinging 60, Stuttgart 2013, p. 86ff. The present lot is subject to conservation legislation (ASB).



Čís. Položky 113

An "Inca" lounge chair with ottoman, designed by Arne Norell,

Vyvolávací cena:

EUR 1.800,-

c. 1965, for Norell Mobler AB, Sweden, beechwood, stained, leather straps, upholstery with detachable neckrest, fabric cover (replaced, detachable), height c. 89 cm, width c. 92 cm, depth c. 100 cm, height of seat c. 42 cm. (DRAX)



Čís. Položky 114

An "Odin" cutlery service for 12 persons, designed by Jens Quistgaard,

Dosažená cena:

EUR 950,-

Vyvolávací cena:

EUR 800,-

1962, for Dansk Designs Germany, 55 pieces, silver plated metal, maker's mark. (DRAX)



Čís. Položky 115

A mirror with adjustable wall arm, designed by Uno & Östen Kristiansson

Vyvolávací cena:

EUR 400,-

(attributed) c. 1960, for Vittsjömöbel, Sweden, adjustable teak construction with framing and round mirror surface, stamped 'Vittsjömöbel' and 'Made in Sweden' on the reverse. Dimensions: diameter c. 44 cm, depth c. 19 cm. Signs of age and use, scratches and abrasions. (MHA)



Čís. Položky 111

Two lounge chairs mod. 1001, designed by Sven Ivar Dysthe,

Dosažená cena:

EUR 800,-

Vyvolávací cena:

EUR 800,-

c. 1960, for Dokka Möbler ed. Classic, pared-down, four-legged structure in chromium plated metal and rosewood, upholstered, black leather cover. Height c. 80 cm, width c. 72 cm, depth c. 74 cm. Slight signs of age and use, partly small scratches and minor abrasions, isolated minor chipping, partly slight traces of oxidation. (MHA)

The present lot is subject to conservation legislation (ASB).



Čís. Položky 116

Two chairs mod. 4110, designed by Kai Kristiansen

Dosažená cena:

EUR 300,-

Vyvolávací cena:

EUR 300,-

c. 1960, for Fritz Hansen, Denmark, four-legged teak wood structure, upholstered seat coverings. The underside marked with stamp. Dimensions of each chair: height c. 72 cm, width c. 49 cm, depth c. 47 cm, height of seat c. 45 cm. Signs of age and use, scratches and abrasions. (MHA)



Čís. Položky 117

A teak dining group: set consisting of four chairs and extensible dining table for H. Sigh & Son, Spöttrup,

Dosažená cena:

EUR 600,-

Vyvolávací cena:

EUR 600,-

Denmark, second half of the 20th century, table: extensible teak construction; chairs: four-legged solid teak structure, repaired, upholstered synthetic leather seat coverings. Dimensions of each chair: height c. 77 cm, width c. 50 cm, depth c. 48 cm, height of seat c. 45 cm; dimensions of table (unextended): height c. 74 cm, width c. 145 cm, extensible to c. 265 cm, depth c. 90 cm. Slight signs of age and use, scratches and abrasions, edges very slightly bumped. (MHA)



Čís. Položky 106

A coffee table, designed by Sören Georg Jensen

Dosažená cena:

EUR 1.100,-

Vyvolávací cena:

EUR 600,-

c. 1960 for Kubus, sculptural construction with solid wood frame and veneered round teak table top. The underside with manufacturer's adhesive label. Dimensions: height c. 54 cm, diameter c. 100 cm. Signs of age and use, scratches and abrasions, isolated minor chipping. (MHA)



Čís. Položky 119

Two dining chairs mod. 178, designed by Johannes Andersen

Vyvolávací cena:

EUR 400,-

c. 1960, for Bramin, Denmark, four-legged teak chair, openwork backrest also made of teak, upholstered seats with light brown covers. Dimensions: height c. 78 cm, width c. 47 cm, depth c. 45 cm, height of seat c. 45 cm. Slight signs of age and wear, scratches and abrasions. (MHA)



Čís. Položky 120

An adjustable highback chair mod. FD 164, designed by Arne Vodder

Dosažená cena:

EUR 360,-

Vyvolávací cena:

EUR 300,-

c. 1960, for France & Son, Denmark, adjustable, four-legged teak structure, loose, unattached seat and back upholstery, light-coloured mottled textile covering. Dimensions: height c. 95 cm, height of seat c. 40 cm, width c. 77 cm, depth c. 85 cm. Signs of age and use, scratches and abrasions, isolated minor chipping. (MHA)



Čís. Položky 123

A bedside table / side table with built-in table lamp mod. 4634-L, designed by George Nelson

Vyvolávací cena:

EUR 1.000,-

c. 1950, for Herman Miller, wood frame construction, with four tapering and slightly flaring legs, integrated table lamp with an adjustable curved aluminium shaft. Two square flower containers under the lamp. These can also be used as jardinières. Height c. 67 cm, width c. 77 cm, depth c. 49 cm. Signs of age and use, scratches and abrasions, some slight residues, without guarantee for electrical fitting. (MHA)



Čís. Položky 124

Two teapots 'Hearts' and 'Wasserkocher' from the series Hommage à Gropius,

Vyvolávací cena:

EUR 500,-

form design TAC/ Walter Gropius, Louis McMillen, 1969, decoration Paul Giovanopoulos and Igor Kopystiansky, artist's teapot made of polychrome glazed porcelain. Inscribed and numbered at the bottom: Hommage à Gropius 69/99 "Hearts" Paul Giovanopoulos (black). Signed on the side: Paul Giovanopoulos; Hommage à Gropius 14/99 "Hearts" Igor Kopystiansky (black). Signed on the side: Igor Kopystiansky. Dimensions of each element: height c. 13 cm, width c. 25 cm, depth c. 18 cm. Slight signs of age and use. (MHA)

Number 14 and 69 from the limited editions of 99.



Čís. Položky 125

176 copper wall tiles, designed by Edit Oborzil and Tibor Jeney

Vyvolávací cena:

EUR 4.000,-

c. 1968 for the Hotel Helikon at Lake Balaton, Hungary, artistic rectangular copper wall tiles with an abstract sun motif in a concave, convex form or with a round recess in the centre. Dimensions of each element: height c. 20 cm, width c. 10 cm. The set includes a total of 176 individual elements. When assembled, they reach a height of c. 220 cm and a width of c. 170 cm. Each element has 8 holes on the side for mounting. The elements can be freely combined. Please note that the individual elements are disassembled. The photo of the wall panel is a sample photo. Signs of age and use, scratches and abrasions, partly with small deformations, residues. (MHA)

Edit Oborzil was born in Budapest in 1921 and died in 1996. During her studies she met her future husband, the craftsman Tibor Jeney. After graduating from the Academy, Oborzil became a versatile artist. She was also commissioned to design the copper panels for the interior of the legendary Hotel Helikon at Lake Balaton in Hungary. The hotel interior was also designed by other renowned Hungarian artists of the 1960s and 1970s, including the painter Gabor (Gabriel) Szinte and the ceramist Janos (John) Majoros. The hotel was built in 1968-1971 and was the biggest investment of the socialist government. The Helikon Hotel in Keszthely opened its doors on 9 May 1971 and was considered the most elegant and modern hotel on Lake Balaton at that time. After the reunification of Germany and the resulting changes in Eastern Europe, the hotel remained in operation until 2016 before closing for renovation work. The owner had been a regular guest of the hotel himself and was able to witness the exceptional style and beauty of its interior. Provenance: Formerly part of the interior of the Hotel Helikon at Lake Balaton in Hungary.



Čís. Položky 118

A teak sideboard, Denmark, c. 1960,

Dosažená cena:

EUR 850,-

Vyvolávací cena:

EUR 600,-

box-shaped teak construction, the front with four drawers and one sliding door, verso with stamp: inter alia "No. 1606 NM Made in Denmark". Dimensions: height c. 88 cm, width c. 140 cm, depth c. 45 cm. Signs of age and use, scratches and abrasions. (MHA)



Čís. Položky 126

A large, rare coffee table, Roger Capron,

Vyvolávací cena:

EUR 1.000,-

France c. 1960, solid wooden frame on four legs, glazed ceramic tiles, signed: R. CAPRON. Height c. 36 cm, width c. 140 cm, depth c. 55 cm. Signs of age and use, scratches and abrasions, isolated minor chipping. (MHA)



Čís. Položky 122

A table / dining table “Segmented Table”, designed by Charles & Ray Eames

Dosažená cena:

EUR 1.100,-

Vyvolávací cena:

EUR 1.000,-

1964, for Vitra, slightly elliptical table top made of solid Bianco Carrara marble on a four-star support, die-cast aluminium legs, two columns made of chromium plated tubular steel. Dimensions: height c. 73 cm, width c. 152 cm, depth c. 91 cm. Signs of age and use, scratches and abrasions. (MHA)

Custom-made with solid Bianco Carrara marble top.



Čís. Položky 127 +

Two lounge armchairs mod. RH 310, designed by Robert Haussmann

Vyvolávací cena:

EUR 2.000,-

c. 1960, for Swiss Design De Sede, reduced upholstered wood frame construction, tufted white leather cover, four chromium plated round steel legs. Dimensions of each item: height c. 65 cm, width c. 86 cm, depth c. 70 cm, height of seat c. 43 cm. Slight signs of age and use, scratches and abrasions, one chair with two tears to the underlying fabric. (MHA)



Čís. Položky 128

A large sideboard, school of Paolo Buffa,

Dosažená cena:

EUR 1.500,-

Vyvolávací cena:

EUR 1.500,-

Italy, mid-20th century, four-legged clear lacquered wooden frame construction, brass sabots, the front partly with rosewood marquetry, five doors, one of them with depiction of people and landscape, unattached top. Dimensions: height c. 94 cm, width c. 250 cm, depth c. 50 cm. Signs of age and use, partly scratches and abrasions. (MHA)

High quality workmanship. The present item is subject to conservation legislation (ASB).



Čís. Položky 121

A set of six chairs and two armchairs mod. 'Rungstedlund', designed by Ole Wanscher

Dosažená cena:

EUR 850,-

Vyvolávací cena:

EUR 500,-

1967, for Poul Jeppesen Møbelfabrik, Denmark, four-legged mahogany structure, upholstered, replaced red seat coverings. Marked with factory labels. Dimensions of each item: 78 cm, width c. 47 cm / 52 cm, depth c. 47 cm, height of seat c. 44 cm. Signs of age and use, scratches and abrasions, replaced seat coverings. (MHA)



Čís. Položky 129

A ceiling lamp mod. 'Giogali', designed by Angelo Mangiarotti

Vyvolávací cena:

EUR 800,-

1967, for Vetreria Vistosi, Murano, sculptural construction made of metal tube, sheet metal, chromium plated, numerous clear glass hooks, wired for four lights. Dimensions: diameter c. 60 cm, height c. 50 cm. Slight signs of age and use, scratches and abrasions, isolated minor chipping, without guarantee for electrical fitting and completeness. (MHA)

Cf. Lit.: Finessi, su Mangiarotti, Milan 2002, p. 162ff; Fiell, 1000 Lights, vol. 2, Cologne 2005, p. 116.



Čís. Položky 131

A wall mirror, Italy,

Dosažená cena:

EUR 400,-

Vyvolávací cena:

EUR 400,-

mid-20th century, construction with hexagonal teak frame and hexagonal mirror surface, rope suspension. Dimensions: height c. 61 cm, diameter c. 55 cm, depth c. 3.5 cm. Signs of age and use, scratches and abrasions. (MHA)



Čís. Položky 133

A large ceiling lamp, E. Bakalowits & Söhne,

Vyvolávací cena:

EUR 1.000,-

Vienna c. 1960, metal frame with diametrically arranged hand-cut crystal glass stones, wired for 12 lights. Height c. 80 cm, diameter c. 70 cm. Slight signs of age and use, scratches and abrasions, without guarantee for electrical fitting. (MHA)



Čís. Položky 130

A serving trolley, designed by Franco Campo and Carlo Graffi

Dosažená cena:

EUR 450,-

Vyvolávací cena:

EUR 400,-

(attributed) c. 1960, for Stilcasa Creazioni, Italy, construction made of a black lacquered metal frame on castors, two teak shelves. Dimensions: height c. 68 cm, width c. 64 cm, depth c. 44 cm. Slight signs of age and use, scratches and abrasions. (MHA)



Čís. Položky 134

A floor lamp, school of Josef Frank,

Vyvolávací cena:

EUR 1.000,-

mid-20th century, white varnished metal shaft with four-legged base and brass mounts, cylindrical textile shade, wired for two lights. Dimensions: height c. cm, width c. cm, depth c. cm. Signs of age and use, scratches and abrasions, without guarantee for electrical fitting. (MHA)



Čís. Položky 135

A ceiling lamp, E. Bakalowits & Söhne,

Vyvolávací cena:

EUR 1.000,-

Vienna c. 1960, metal frame with diametrically arranged hand-cut crystal glass stones, wired for multiple lights. Height c. 100 cm, diameter c. 60 cm. Slight signs of age and use, scratches and abrasions, without guarantee for electrical fitting. (MHA)



Čís. Položky 132

Two cubic stools mod. 'Kubile',

Dosažená cena:

EUR 500,-

Vyvolávací cena:

EUR 300,-

designed in 1967 for MIM Roma, Italy, cubic construction made of orange-brown fibreglass, circular black seat padding. Marked with impressed mark MIM on the underside. Dimensions of each element: height c. 34 cm, width c. 41 cm, depth c. 41 cm.

Cf. Lit.: Domus 454 (September 1967 issue) p. 38. Signs of age and use, scratches and abrasions, isolated minor chipping. (MHA)



Čís. Položky 136

A large hallstand, Carl Auböck,

Dosažená cena:

EUR 1.500,-

Vyvolávací cena:

EUR 1.500,-

Vienna c. 1948, for Werkstätten Carl Auböck, beechwood, with a natural finish and black lacquered, with seven brass hooks. Height c. 75 cm, width c. 150 cm, depth c. 10 cm. Signs of age and use, scratches and abrasions. (MHA) A large model.



Čís. Položky 137

A tree table, Carl Auböck *,

Vyvolávací cena:

EUR 2.000,-

Vienna 1950 / 1952, walnut disc, flaring patinated brass legs with rubber sabots. With numbering ("8") and hallmark "Made in Austria". Dimensions: height c. 37 cm, length c. 63 cm, depth c. 30 cm. Signs of age and use, scratches and abrasions. (MHA)

Cf. Lit.: Arbeiten der Werkstätte Carl Auböck fotografiert 1948-2005, III/38



Čís. Položky 138

A newspaper rack mod. 4101, Carl Auböck,

Vyvolávací cena:

EUR 400,-

Vienna c. 1955/60, patinated brass, split leather, dimensions: height c. 40 cm, length 50 cm, depth 25 cm. Signs of age and use, scratches and abrasions. (MHA)

Cf. Lit.: Die Arbeiten der Werkstätte Carl Auböck, Carl Auböck Archiv, Vienna 2005, VI/ 32.



Čís. Položky 140

A rare jardinière, Carl Auböck,

Vyvolávací cena:

EUR 2.000,-

Vienna around 1950, walnut wood construction with round tabletop and three solid brass legs. Dimensions: height c. 41 cm, width c. 40 cm, depth c. 40 cm. Signs of age and use, scratches and abrasions, partly slight traces of oxidation. (MHA)

A rare piece of furniture.



Čís. Položky 141

A large and small fruit basket,

Dosažená cena:

EUR 450,-

Vyvolávací cena:

EUR 400,-

Carl Auböck, Vienna c. 1950, sculptural brass rod construction, dimensions: length c. 31 / 15 cm, width c. 19.5 / 11 cm, height c. 9.5 / 4 cm. Marked. Signs of age and use, scratches and abrasions. (MHA)



Čís. Položky 142

A large watering can, Carl Auböck, Vienna,

Dosažená cena:

EUR 400,-

Vyvolávací cena:

EUR 400,-

c. 1960, sculptural brass can with spout, partly patinated. Marked Auböck and Made in Austria on the underside. Dimensions: height c. 13 cm, length c. 48 cm. Signs of age and use, scratches and abrasions. (MHA)



Čís. Položky 139

A hallstand, Carl Auböck,

Dosažená cena:

EUR 1.100,-

Vyvolávací cena:

EUR 800,-

Vienna c. 1948, for Werkstätten Carl Auböck, beechwood, with a natural finish and black lacquered, with seven brass hooks. Height c. 75 cm, width c. 70 cm, depth c. 10 cm. Signs of age and use, scratches and abrasions. (MHA)



Čís. Položky 143

A candlestick, a pan and a plate, Carl Auböck, Vienna

Vyvolávací cena:

EUR 200,-

c. 1940 / 1950, brass and teak wood constructions, marked. Dimensions: candle stick height c. 7 cm, pan diameter c. 14.5 cm, plate diameter c. 15.5 cm. Signs of age and use, scratches and abrasions. (MHA)



Čís. Položky 144

An ashtray / bowl, Carl Auböck,

Dosažená cena:

EUR 300,-

Vyvolávací cena:

EUR 300,-

Vienna c. 1960, sculptural brass construction. The underside hallmarked: 'Auböck'. Height c. 5 cm, width c. 20 cm, depth c. 10 cm. Signs of age and use, scratches and abrasions, partly slight traces of oxidation. (MHA)



Čís. Položky 145

A candle stick, Carl Auböck,

Dosažená cena:

EUR 150,-

Vyvolávací cena:

EUR 150,-

Vienna c. 1960, sculptural brass construction. Height c. 5 cm, width c. 5.5 cm, depth c. 12.5 cm. Signs of age and use, scratches and abrasions. (MHA)



Čís. Položky 146

A newspaper rack "Amerikaner" mod. 4172, Carl Auböck,

Dosažená cena:

EUR 480,-

Vyvolávací cena:

EUR 300,-

Vienna 1952/53, bent blackened iron rods, bent polished round brass, stitched brown split leather, height 57.5 cm, width 37 cm, depth 44 cm. Signs of age and use, scratches and abrasions (MHA)

A rare model. Lit.: Die Kataloge der Werkstätte Carl Auböck 1925-1975, E/08 - Arbeiten der Werkstätte Carl Auböck fotografiert von 1948-2005, III/43 (as mod. 212 without leather insert), VII/19 (exhibition photo, History Museum Vienna, 1997) - Carl Auböck 1900-1957. Maler und Designer, History Museum Vienna, 1997, p. 168, p. 170, ill. 5.70.



Čís. Položky 147

An early, large hallstand, Carl Auböck,

Dosažená cena:

EUR 800,-

Vyvolávací cena:

EUR 800,-

Vienna c. 1948, steel frame, seven wooden slats, 10 solid brass hooks, height c. 120 cm, width c. 140 cm, depth c. 8.5 cm. Signs of age and use, scratches and abrasions. (MHA)

A rare version. Lit.: Die Kataloge der Werkstätte Carl Auböck 1925- 1975, Vienna 2005, E/02, D/39 (model with hooks) - Arbeiten der Werkstätte Carl Auböck 1948- 2005, Vienna 2005, VIII/2



Čís. Položky 148

A dessert service mod. 2060, designed by Carl Auböck

Dosažená cena:

EUR 500,-

Vyvolávací cena:

EUR 500,-

1956, set consisting of a ladle, 6 dessert spoons, a serving bowl, 6 dessert bowls, 1 large saucer, 6 small saucers in a box for Morinox, Italy, stainless steel, marked. Slight signs of age and use, scratches and abrasions. (MHA)

In the original box. With certificate.



Čís. Položky 149

A serving trolley, Carl Auböck,

Dosažená cena:

EUR 1.700,-

Vyvolávací cena:

EUR 1.500,-

Vienna 1953, black lacquered tubular iron, wickerwork, wooden wheels, height c. 59 cm, length c. 65 cm, depth c. 54 cm. Signs of age and use, scratches and abrasions (MHA)

Lit.: Arbeiten der Werkstätte Carl Auböck. Fotografiert 1948- 2005, p. III/33, ill. 172.



Čís. Položky 150

A ceiling lamp from the 3646 model series, E. Bakalowits & Söhne,

Vyvolávací cena:

EUR 1.000,-

Vienna, c. 1960, metal frame with diametrically arranged cut-glass finials, wired for nine lights. Height c. 50 cm, diameter c. 50 cm. Slight signs of age and use, scratches and abrasions, without guarantee for electrical fitting. (MHA)



Čís. Položky 151

A Dornstab lamp mod. 2076, J. T. Kalmar,

Dosažená cena:

EUR 1.000,-

Vyvolávací cena:

EUR 1.000,-

Vienna c. 1952, cast brass, walnut wood shaft, lamp shade, adjustable to three heights, height 152 cm. Signs of age and use, scratches and abrasions, without guarantee for electrical fitting. (MHA)

Cf. Lit.: J. T. Kalmar, Leuchtenkatalog 60, BL 1 Design V/1.



Čís. Položky 152

A large, magnificent ceiling lamp mod. Tulipan, J. T. Kalmar,

Dosažená cena:

EUR 1.500,-

Vyvolávací cena:

EUR 1.500,-

designed in 1965, Vienna, reduced construction made of white varnished metal, fitted for 28 lights and 155 glass elements, height c. 110 incl. hanging rod / height c. 35 cm (chandelier), diameter c. 102 cm, 28 lamp sockets E 14 / 2 circuits, copies of the original receipt / assembly instructions / documentation and photos are available. Disassembled. Slight signs of age and use, scratches and abrasions, without guarantee for electrical fitting and completeness. (MHA)



Čís. Položky 154

A ceiling lamp mod. Tulipan, J. T. Kalmar,

Vyvolávací cena:

EUR 800,-

designed in 1965, Vienna, reduced construction made of white lacquered metal, fitted for multiple lights and glass elements, dimensions: diameter c. 50 cm, including a threaded rod with a length of c. 150 cm. Numerous replacement glasses available. Slight signs of age and use, scratches and abrasions, without guarantee for electrical fitting and completeness. (MHA)



Čís. Položky 155

A set of four 3-4-3 stacking chairs, Roland Rainer

Dosažená cena:

EUR 1.600,-

Vyvolávací cena:

EUR 1.000,-

c. 1952, manufactured by Wilkening & Hahne (Wilkahn), Germany, solid beechwood and beech plywood, moulded, with a natural finish and black lacquered, height c. 83 cm, width c. 45 cm, depth c. 54 cm, height of seat c. 43 cm. Signs of age and use, scratches and abrasions, partly with minor chipping. (MHA)

Cf. Lit.: R. Berpohl - H. Win Das Möbelbuch, Gütersloh 1958, ill. 14 (upholstered variant).



Čís. Položky 156

A globular chandelier, designed by Emil Stejnar

Dosažená cena:

EUR 380,-

Vyvolávací cena:

EUR 300,-

c. 1955, manufactured by A. Rupert Nikoll, brass, partly white lacquered, faceted glass in the shape of blossoms, diameter c. 42 cm, height c. 60 cm. Signs of age and use, scratches and abrasions, partly residues / staining, without guarantee for completeness and electrical fittings. (MHA)

Originally designed for the former "Ohne Pause Espresso" bar on Graben in Vienna, which was planned in its entirety and completely furnished by architect Emil Stejnar in 1955. Cf. Lit.: Die Presse, 17.4.1955.



Čís. Položky 153

Three folding chairs,

Dosažená cena:

EUR 1.600,-

Vyvolávací cena:

EUR 1.200,-

Austria 1950s, variation of model no. 512 by Hans J. Wegener, 1949, for Fritz Hansen, Denmark, solid walnut, braided cord, height c. 98 cm, width c. 60 cm, depth c. 95 cm, height of seat c. 35 cm. (DRAX)

Provenance: Private Collection, Horner House, 1130 Vienna



Čís. Položky 157

Three lounge chairs mod. 65, designed by Florence Knoll

Vyvolávací cena:

EUR 2.000,-

1958, for Knoll International, upholstered, four-legged structure made of chromium plated metal, stitched black leather covers. Dimensions of each element: height c. 80 cm, width c. 72 cm, depth c. 80 cm. Signs of age and use, scratches and abrasions. (MHA)

Cf. Lit.: Steven & Linda Rouland, 1938-1960 Knoll Furniture, Atglen USA 1999, cf. ill. p. 95.



Čís. Položky 158

A sideboard mod. 119, designed by Florence Knoll,

Vyvolávací cena:

EUR 2.600,-

c. 1950, for Knoll International, four legs, box-shaped veneered construction with four sliding doors and metal handles. Height c. 70 cm, width c. 190 cm, depth c. 46 cm. Signs of age and use, scratches and abrasions. (MHA)

Cf. Lit.: Knoll International, factory catalogue, ill. p. XII ("119 Eßzimmerkommode").



Čís. Položky 159

Two lounge armchairs mod. 65 A, designed by Florence Knoll

Vyvolávací cena:

EUR 2.000,-

1958, for Knoll International, upholstered, four-legged structure made of chromium plated metal, stitched black leather covers. One chair marked with manufacturer's adhesive label. Dimensions of each element: height c. 80 cm, width c. 86 cm, depth c. 78 cm. Signs of age and use, scratches and abrasions.

Cf. Lit.: Steven & Linda Rouland, 1938-1960 Knoll Furniture, Atglen USA 1999, cf. ill. p. 95.



Čís. Položky 161

A rare lounge sofa, designed by Fritz Neth

Vyvolávací cena:

EUR 7.500,-

c. 1950, for Sitzformbau Kassel / Correcta, Munich, Germany, upholstered, four-legged structure with slightly flared metal legs, replaced greyish blue mottled fabric cover. Dimensions: height c. 90 cm, width c. 150 cm, depth c. 90 cm, height of seat c. 44 cm. Signs of age and use, scratches and abrasions, the cover replaced a long time ago. (MHA)

The counterpart of the Madame armchair.



Čís. Položky 162 +

A sculptural lounge chair mod. 120-LF, designed by Erwin and Estelle Laverne

Vyvolávací cena:

EUR 2.000,-

1959, for Laverne International, sculptural construction, metal support with circular base, seat shell in the shape of a tulip made of cream-coloured fibreglass. Dimensions: height c. 125 cm, width c. 120 cm, depth c. 81 cm. Cf. Lit.: Laverne International, factory catalogue, p. 8. Signs of age and use, scratches and abrasions. (MHA)



Čís. Položky 163

A wall applique, Serge Mouille*, France

Dosažená cena:

EUR 3.200,-

Vyvolávací cena:

EUR 3.000,-

c. 1953, aluminium shade, black coated exterior, white coated interior, black lacquered iron rod, brass hinge, aluminium wall bracket, height c. 62 cm, depth c. 50 cm. (DRAX)

Lit.: Mobilier Décoration, No. 9, 1953, with ill.



Čís. Položky 160

An "Atomic" chandelier, designed by J. T. Kalmar,

Dosažená cena:

EUR 1.000,-

Vyvolávací cena:

EUR 1.000,-

Vienna 1969, futuristic construction made of chromium plated metal, wired for numerous lights, spherical diffusers made of frosted glass, inscribed with manufacturer's adhesive label. Diameter c. 55 cm, height c. 90 cm. Signs of age and use, a few scratches and partial abrasions, without guarantee for electrical fitting. (MHA)



Čís. Položky 164

An "Agraffe" clamp lamp, Serge Mouille*, France

Dosažená cena:

EUR 3.000,-

Vyvolávací cena:

EUR 3.000,-

1950s, aluminium lampshade, black coated exterior, white coated interior, black lacquered frame, brass ball joints, old socket, height c. 50 cm, depth c. 26 cm. (DRAX)

Lit.: Jean Prouvé et Serge Mouille. Deux maitres de metal, cat. Anthony Delorenzo, NY & Christine Counord, Paris, 1985, p. 132.



Čís. Položky 166

An imposing chandelier from the Congress Building in Salzburg,

Vyvolávací cena:

EUR 1.600,-

before refurbishment, Austria c. 1958/60, construction with hexagonal lamp housing made of black lacquered iron rods, crystal glass prisms, chain suspension, equipped with 96 burners, height approx. 145 cm (without chain). Signs of age and wear, scratches and abrasions, without guarantee for electrical fitting. (MHA)



Čís. Položky 167

A set of six folding chairs /stacking chairs, designed by Erich Schelling

Vyvolávací cena:

EUR 900,-

c. 1950, for Mauser-Werke, Waldeck, Germany, constructions with chromium plated tubular steel support, hinged seat, walnut veneer, marked with round factory labels. Dimensions of each item: height c. 78 cm, width c. 50.5 cm, depth c. 58 cm. Signs of age and use, scratches and abrasions. (MHA)



Čís. Položky 168

A rare ceiling lamp / wall lamp mod. 3026, designed by Gino Sarfatti

Vyvolávací cena:

EUR 5.000,-

1954, for Arteluce/Italy, classic pared-down structure made of lacquered metal sheet and metal, wired for two neon tubes, marked with manufacturer's adhesive label. Dimensions: length c. 180 cm, depth c. 21 cm, height c. 32 cm. Slight signs of age and use, partly scratches and abrasions, isolated slight (lacquer) losses, without guarantee for electrical fitting. (MHA)

Lit.: Roberto Aloï, *Esempi Di Decorazione Moderna Di Tutto Il Mondo, Illuminazione d'Oggi*, Milan, 1956, p. 180; Marco Romanelli and Sandra Severi, *Gino Sarfatti: Selected Works 1938- 1973*, Milan, 2012, pp. 260, 484. Provenance: First ownership, purchased directly from Arteluce.



Čís. Položky 169

An "Infinito" bookcase / shelving unit mod. 835, designed by Franco Albini & Franca Held

Dosažená cena:

EUR 2.400,-

Vyvolávací cena:

EUR 2.000,-

1956 / 1957, for Cassina, Italy, adjustable wood frame construction, rosewood finish, 2 elements, each with 2 side rails, uprights and 7 shelves. Dimensions of each side rail: height c. 352 cm, width c. 7.5 cm, dimensions of each shelf: width c. 80 cm, depth c. 25 cm, height c. 5 cm. Signs of age and use, scratches and abrasions, finials partly supplemented, one of them missing. (MHA)

The present lot is subject to conservation legislation (ASB).



Čís. Položky 171

A round wall mirror, designed in around 1940, manufactured by Venini & C. Murano,

Dosažená cena:

EUR 850,-

Vyvolávací cena:

EUR 800,-

Italy, classic form made of clear glass with pigment powder inclusions and bursting gold foil inclusions, framed with diagonal, turned ribbed shape, mirror glass. Dimensions of the mirror: diameter c. 40 cm. Marked "Venini Murano" on the mounting on the reverse. Slight signs of age and wear, scratches and abrasions. (MHA)



Čís. Položky 172

A lounge chair "Spanish Chair" mod. 2226, designed by Borge Mogensen

Dosažená cena:

EUR 1.500,-

Vyvolávací cena:

EUR 1.200,-

1958 / 1959, for Fredericia Stolefabric / Denmark, four-legged solid oakwood structure, with core leather seat and back surfaces. Dimensions: height c. 68 cm, width c. 82 cm, depth c. 60 cm, height of seat c. 33 cm. Signs of age and wear, scratches and abrasions, partly with patina / residues, isolated minor chipping. (MHA) Borge Mogensen's Spanish armchair is a new interpretation of the classic chair type. It derives its name from Mogensen's trip to Spain in 1958. The model represents a symbiosis between robustness and comfort. Lit.: N. Oda, Danish chairs, Tokyo 1999, p. 136



Čís. Položky 173

A set of four suspension lamps Bodil Marie Nielsen,

Vyvolávací cena:

EUR 1.000,-

Denmark c. 1950, sculptural, cylindrical construction made of brown glazed stoneware, with impressed mark: 'Bodil Marie Nielsen Denmark', fitted for electricity. Different measurements, amongst others height c. 30 cm, diameter c. 20 cm. Slight signs of age and use, scratches and abrasions, without guarantee for electrical fitting. (MHA)



Čís. Položky 170

A ceiling lamp “Poliedri”, designed by Carlo Scarpa

Dosažená cena:

EUR 900,-

Vyvolávací cena:

EUR 800,-

1958 – 1960, for Venini, Italy, white lacquered metal construction, on which diametrically and cascade-shaped clear and slightly tinted glass hangings in polyhedron form are mounted, fitted for multiple lights. Including one wall appliques from an identical series.

Dimensions: diameter c. 55 cm, total height c. 140 cm; dimensions of wall applique: height c. 30 cm, width c. 20 cm. Signs of age and use, scratches and abrasions, slightly chipped in places, losses (to the lacquer), without guarantee for electrical fitting and completeness. (MHA)

Cf. Lit.: Vetri di Murano, Edizioni D'Arte, 1967, p. 204; Venini architectural lighting, product catalogue.



Čís. Položky 174

A lounge chair “Spanish Chair” mod. 2226, designed by Borge Mogensen

Dosažená cena:

EUR 1.400,-

Vyvolávací cena:

EUR 1.200,-

1958 / 1959, for Fredericia Stolefabric / Denmark, four-legged solid oakwood structure, with core leather seat and back surfaces.

Dimensions: height c. 68 cm, width c. 82 cm, depth c. 60 cm, height of seat c. 33 cm. Signs of age and wear, scratches and abrasions, partly with patina / residues, isolated minor chipping. (MHA) Borge Mogensen's Spanish armchair is a new interpretation of the classic chair type.

It derives its name from Mogensen's trip to Spain in 1958. The model represents a symbiosis between robustness and comfort. Lit.: N. Oda, Danish chairs, Tokyo 1999, p. 136



Čís. Položky 175

A dining table mod. 162 with folding parts, designed by Borge Mogensen,

Dosažená cena:

EUR 1.600,-

Vyvolávací cena:

EUR 1.600,-

1953, for Soborg Mobelfabrik, Denmark, teak, double steel legs, height c.73 cm, c. 140/240 x 190 cm. (DRAX)



Čís. Položky 176

A “PH Cone / Artichoke” hanging light, designed by Poul Henningsen

Dosažená cena:

EUR 2.600,-

Vyvolávací cena:

EUR 2.200,-

1957 - 1959, for the Langelinie Pavilion in Copenhagen, manufactured by Louis Poulsen. The shade composed of white lacquered metal lamellas attached to chromium plated steel arches. Diameter c. 84 cm. Slight signs of age and use, scratches and abrasions, without guarantee for electrical fitting. (MHA)

The largest version of the model series cf. lit.: “Taend PH-lampens historie”, illustrated and mentioned pp. 276, 277, 278.



Čís. Položky 177

A dining group: set of six heart chairs mod. no. FH4103 and matching dining table mod. no. FH4602, designed by Hans J. Wegner

Dosažená cena:

EUR 5.000,-

Vyvolávací cena:

EUR 5.000,-

c. 1950, for Fritz Hansen, three-leg construction made of beechwood, oak and teak, stacking chairs. Dimensions of each chair: height c. 73 cm, width c. 43 cm, depth c. 47 cm, height of seat c. 43 cm; dimensions of table: height c. 71 cm, diameter c. 120 cm. Slight signs of age and use, scratches and abrasions. (MHA)

No longer in production. Cf. Lit.: Neue Möbel, p. 31; Danish Chairs, p. 118. (chairs)



Čís. Položky 178

A writing desk mod. 'AT 305', designed by Hans J. Wegner

Dosažená cena:

EUR 1.500,-

Vyvolávací cena:

EUR 1.200,-

1953, for Andreas Tuck, Denmark, four-legged structure, oak finish, the front with three drawers, rectangular tabletop. With manufacturer's brand mark. Height c. 72 cm, width c. 138 cm, depth c. 76 cm. Signs of age and use, scratches and abrasions. (MHA)



Čís. Položky 179

A "Peacock" armchair ("Windsor Chair"), designed by Hans J. Wegner

Vyvolávací cena:

EUR 2.400,-

1947, for Johannes Hansen, Soeborg, Denmark, four-legged solid ash structure, teak armrests, braided paper cord seat, with brand mark, dimensions: height c. 103 cm, width c. 77 cm, depth c. 77 cm, height of seat c. 36 cm. Slight signs of age and use, scratches and abrasions (MHA)

An early model. Original condition. Lit.: N. Oga, Danish Chairs, San Francisco 1996, p. 106/107. Provenance: Sanziany Collection & Rasumofsky Palace



Čís. Položky 180

An “Egg” Chair (Das Ei) mod. 3316, designed by Arne Jacobsen

Dosažená cena:

EUR 5.000,-

Vyvolávací cena:

EUR 5.000,-

1957/58, for Fritz Hansen, an early model with distinctive shaft, x-shaped aluminium swivelling base, the polyester seat shell upholstered and covered with black leather. Marked with factory label: 'FH Made in Denmark 0565 by Fritz Hansen'. Height c. 105 cm, width c. 89 cm, depth c. 78 cm, height of seat c. 37 cm. Signs of age and use, scratches and abrasions, patina, upholstery partly hardened / brittle. (MHA)

Designed for the SAS Royal Hotels in Copenhagen, which were built by Arne Jacobsen between 1956 and 1960. Lit.: C. Thau - K. Vindum, Arne Jacobsen, Copenhagen.



Čís. Položky 165

A set of three chairs mod. tonneau, Pierre Guariche

Dosažená cena:

EUR 1.700,-

Vyvolávací cena:

EUR 600,-

c. 1950, four-legged structure with black lacquered metal frame, seat pans with brown leather cover, label on the reverse. Dimensions of each item: height c. 74 cm, width c. 39 cm, depth c. 51 cm, height of seat c. 48 cm. Signs of age and use, scratches and abrasions, patina. (MHA)



Čís. Položky 181

An “AJ” cutlery service for 12 persons, designed by Arne Jacobsen,

Dosažená cena:

EUR 3.000,-

Vyvolávací cena:

EUR 3.000,-

1957/58, for A. Michelsen, Copenhagen, 146 pieces, stainless steel, marked: A. MICHELSEN/STAINLESS STEEL/AJ and Michelsen/Made in Denmark. In cardboard boxes. (DRAX)

Early execution of this design by the silversmith of the Court Jeweller A. Michelsen. Subsequently, the cutlery service, which was originally used in the restaurants of the SAS Hotel in Copenhagen, went into mass production at Georg Jensen. The shape was so avant-garde that Stanley Kubrick had the space travellers eat with it in his film “2001 - A Space Odyssey”. Displayed at the XI Triennale in Milan in 1957. Lit.: C. Thau-K. Vindum, Arne Jacobsen, Kopenhagen 2002, p. 146/147, p. 474 - S. Prinz, Bestecke des 20. Jahrhunderts, Munich 1993, p. 74 - J. W. Woodham, Twentieth Century Design, Oxford-New York 1997, p. 130, ill. 88



Čís. Položky 182

Two armchairs mod. 62, designed by Niels O. Möller

Vyvolávací cena:

EUR 3.400,-

1962, for J. L. Møllers Møbelfabrik, four-legged rosewood structure, seats with original leather cover, height c. 80.5 cm, width c. 56 cm, depth c. 51 cm, height of seat c. 44 cm. (MHA) Slight signs of age and use, scratches and abrasions. (MHA)

The present lot is subject to conservation legislation (ASB).



Čís. Položky 183

A teak extension table / dining table, for J. L. Møllers Møbelfabrik,

Vyvolávací cena:

EUR 400,-

Denmark, four-legged, extendable construction made of solid and veneered teak wood. Height c. 80 cm, width c. 120-214 cm, depth c. 75 cm. Signs of age and use, scratches and abrasions. (MHA)



Čís. Položky 184

A set of four chairs model 77, designed by Niels O. Møller

Dosažená cena:

EUR 800,-

Vyvolávací cena:

EUR 800,-

1959, for J. L. Møllers Møbelfabrik, Denmark, organically moulded solid teak wood, seats with replaced polychrome covers decorated with geometrical forms. Dimensions of each armchair: height c. 77 cm, width c. 49.5 cm, depth c. 52 cm. Slight signs of age and use, scratches and abrasions, replaced seat coverings. (MHA)



Čís. Položky 185

A set of four armchairs mod. Portex, designed by Orla Molgaard-Nielsen & Peter Hvidt

Vyvolávací cena:

EUR 1.000,-

1944, for Thonet, four-legged beechwood and beech plywood construction. Marked with manufacturer's adhesive label. Height c. 81 cm, width c. 62 cm, depth c. 62 cm. Signs of age and wear, scratches and abrasions. (MHA) The name of this chair model comes from its first manufacturer, the company Portex in Denmark. At the time, the chair was produced in teak. Further manufacturers: Fritz Hansen, Allerød and, as in this case, Thonet, Vienna. Lit. Danish Chairs, p. 78f.; George Nelson, Chairs, p. 43.



Čís. Položky 186

A pair of "Rebhuhn" table/wall lamps mod. 1184, designed by J. T. Kalmar, Vienna

Vyvolávací cena:

EUR 1.800,-

1937, brass, original shade, painted parchment, tilting, each c. 28 cm. (DRAX)

Presented at the 1937 World's Fair in Paris. Lit.: J. T. Kalmar. Leuchtenkatalog 60, p. WTL 5 - Neues Wohnen. Wiener Innenraumgestaltung 1918-1938. Österreichisches Museum für Angewandte Kunst, Vienna 1980, p. 83, ill. 90



Čís. Položky 187

A side table, designed by Julius Jirasek

Vyvolávací cena:

EUR 600,-

Vienna c. 1932, for Werkstätte Karl Hagenauer, four-legged solid walnut structure, wickerwork, unattached black tinted glass plate, dimensions: height c. 59 cm, width c. 80 cm, depth c. 55 cm. Signs of age and wear, scratches and abrasions. (MHA)



Čís. Položky 188

A door handle, designed and manufactured by Werkstätten Hagenauer,

Dosažená cena:

EUR 650,-

Vyvolávací cena:

EUR 500,-

Vienna, 1950s, patinated cast brass figural construction with knob in the shape of a gazelle's head. Dimensions: height c. 26 cm, width c. 22.5 cm, depth c. 18 cm. (MHA)

This door handle was used at the entrances to the Gazelle lingerie stores and soon became part of the company's corporate identity. Signs of age and use, scratches and abrasions. Provenance: The present object originates directly from the Gazelle headquarters and was personally owned by the company's CEO.



Čís. Položky 189

A leaping dog, designed in around 1930, for Werkstätten Hagenauer,

Dosažená cena:

EUR 1.000,-

Vyvolávací cena:

EUR 1.000,-

Vienna, nickel plated brass sculptural construction in the form of a dog, on a base, marked on the underside with Karl, WHW in a circle and Hagenauer Wien. Dimensions: height c. 20 cm. Slight signs of age and use, scratches and abrasions. (MHA)



Čís. Položky 190

A table lamp with a dog, manufactured by Werkstätten Hagenauer,

Vyvolávací cena:

EUR 2.000,-

Vienna, brass sculptural construction, sculptural dog, mounted on a brass plate, supplemented conical shade. Dimensions: height c. 50 cm. Slight signs of age and use, scratches and abrasions, supplemented lampshade, without guarantee for electrical fitting. (MHA)



Čís. Položky 191

A prancing horse, designed in around 1930, for Werkstätten Hagenauer,

Dosažená cena:

EUR 1.800,-

Vyvolávací cena:

EUR 1.800,-

Vienna, brass sculptural construction in the form of a horse, on a base, marked on the underside WHW in a circle, Made in Austria and Hagenauer Wien. Dimensions: height c. 22 cm. Slight signs of age and use, scratches and abrasions. (MHA)



Čís. Položky 192

A lady's bust, designed by Karl Hagenauer

Dosažená cena:

EUR 1.500,-

Vyvolávací cena:

EUR 1.500,-

c. 1930, for Werkstätte Hagenauer Wien, sculptural construction in the form of a lady's bust made of cast and patinated brass, on a base, marked on the underside with WHW in a circle, Hagenauer Wien and Made in Germany. Dimensions: height c. 50 cm. Slight signs of age and use, scratches and abrasions. (MHA)



Čís. Položky 193

Horse heads, designed by Franz Hagenauer

Dosažená cena:

EUR 2.600,-

Vyvolávací cena:

EUR 2.600,-

c. 1930, for Werkstätten Hagenauer, Vienna, figural construction made of metal, brass and wood, the underside marked with WHW in a circle and Hagenauer Wien, Made in Austria and Handmade. Dimensions: height c. 14 cm, width c. 40 cm, depth c. 12 cm. Slight signs of age and use, scratches and abrasions. (MHA)



Čís. Položky 194

A horse head, Werkstätte Hagenauer, Vienna

Vyvolávací cena:

EUR 1.000,-

brass sculptural construction in the form of an abstract horse head, attached to a round brass base, marked on the underside with WHW in a circle, Hagenauer and Made in Austria. Dimensions: height c. 15 cm. Signs of age and use, scratches and abrasions. (MHA)



Čís. Položky 195

A horse head, Werkstätte Hagenauer,

Dosažená cena:

EUR 550,-

Vyvolávací cena:

EUR 500,-

Vienna, wood and brass sculptural construction in the form of an abstract horse head, attached to a brass base, marked on the underside with WHW in a circle and Hagenauer Wien. Dimensions: height c. 9 cm. Signs of age and use, scratches and abrasions. (MHA)



Čís. Položky 196

A kneeling youth, designed by Karl Hagenauer

Vyvolávací cena:

EUR 1.000,-

c. 1930/40, for Werkstätten Hagenauer, Vienna, brass sculptural construction in the form of a kneeling boy on a base, marked on the underside with WHW in a circle and Hagenauer Wien. Dimensions: height c. 23 cm. Slight signs of age and use, scratches and abrasions (MHA)



Čís. Položky 197

A wall mirror mod. no. 9139, designed by Karl Hagenauer,

Dosažená cena:

EUR 800,-

Vyvolávací cena:

EUR 800,-

Vienna, c. 1950, for Werkstätten Hagenauer, Vienna, brass sculptural with supplemented mirror surface, marked with WHW in a circle and Hagenauer Wien, Made in Austria and Handmade. Dimensions: height c. 37 cm, width c. 35 cm. Slight signs of age and use, scratches and abrasions. (MHA)

Cf. Lit.: Model book, Werkstätten Hagenauer, no. 9139.



Čís. Položky 198

An armchair, designed by Josef Frank

Dosažená cena:

EUR 800,-

Vyvolávací cena:

EUR 800,-

c. 1935, brown stained wood construction on four legs, back rest with bamboo rails, upholstered seat covered with original fabric from that time. Dimensions: height c. cm, width c. cm, depth c. cm. (MHA)

Cf. Lit.: Josef Frank 1885-1967 von Marlene Ott- Wodni, cf. p. 63 ill. 38, p. 107 ill. 81; p. 126 ill. 97



Čís. Položky 199

A set of four cantilever chairs mod. S 43,

Dosažená cena:

EUR 1.200,-

Vyvolávací cena:

EUR 800,-

designed by Mart Stam in around 1931, manufactured by Thonet, c. 2000, free-swinging chromium plated tubular steel construction, the seat and back surfaces made of black stained plywood, beechwood finish. Marked with metal plaques. Dimensions of each item: height c. 82 cm, width c. 44 cm, depth c. 52 cm, height of seat c. 46 cm. Slight signs of age and use, scratches and abrasions. (MHA)



Čís. Položky 200

A stool, designed by Marcel Breuer

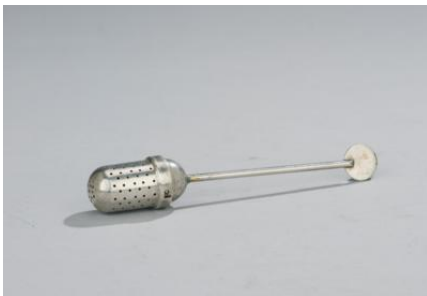
Dosažená cena:

EUR 420,-

Vyvolávací cena:

EUR 400,-

c. 1927, for Thonet, chromium plated tubular steel construction with original fabric covering. Height c. 45 cm, width c. 45 cm, depth c. 40 cm. Signs of age and use, scratches and abrasions. (MHA)



Čís. Položky 201

A tea infuser, designed by Christian Dell

Vyvolávací cena:

EUR 150,-

1924, for the metal workshop of the Bauhaus in Weimar, silver-plated brass construction. Dimensions: length c. 13.5 cm. Signs of age and use, scratches and abrasions. (MHA)

Cf. exh. cat. Die Metallwerkstatt am Bauhaus, Bauhaus-Archiv, Berlin 1992, p. 194.



Čís. Položky 202

A stool mod. B77,

Vyvolávací cena:

EUR 300,-

designed in around 1930, for Thonet, Frankenberg, chromium plated tubular steel construction, black stained wooden seat with natural colour wickerwork, dimensions: height c. 45.5 cm, diameter c. 40 cm. Signs of age and wear, scratches and abrasions. (MHA)



Čís. Položky 203

A coffee and tea service, Hans Przyrembel,

Vyvolávací cena:

EUR 500,-

c. 1930 / 1940, silvered brass construction, teapot and coffee pot with semi-circular black plastic finial, slightly bent side, on an oval base. Four-part set consisting of: coffee pot, teapot, creamer & sugar bowl. Including a stylistically matching tray. Dimensions: height up to c. 19 cm. Signs of age and use, scratches and abrasions, partly slight traces of oxidation, isolated slight deformations.

Hans Przyrembel (1900-1945) was a German metal artist, goldsmith and silversmith as well as a Bauhaus student under Laszlo Moholy-Nagy from 1924 to 1928.



Čís. Položky 204

Two armchairs mod. Wassily Chair, designed by Marcel Breuer

Vyvolávací cena:

EUR 1.200,-

1925, for Gavina / Knoll International, chromium plated tubular steel construction with support, black core leather covering. Dimensions of each element: height c. 73 cm, width c. 78 cm, depth c. 70 cm. Slight signs of age and use, scratches and abrasions. (MHA)



Čís. Položky 206

A hanging lamp, designed and manufactured by Franta Anyz,

Dosažená cena:

EUR 400,-

Vyvolávací cena:

EUR 400,-

Prague c. 1930, brass, reduced construction made of matte nickel-plated brass, wired for three lights (centre and top) also for indirect light. Diameter c. 46 cm, height c. 100 cm. Signs of age and use, scratches and abrasions, without guarantee for electrical fitting. (MHA)



Čís. Položky 207

A desk lamp mod. 1227 “Anglepoise”, designed by George Carwardine

Dosažená cena:

EUR 500,-

Vyvolávací cena:

EUR 500,-

1932, manufactured by Herbert Terry & Sons Ltd, freely adjustable construction made of chromium plated metal and polished aluminium. Inscribed with embossed mark, height max. 85 cm, depth c. 15 cm. Slight signs of age and use, scratches and abrasions, without guarantee for electrical fitting. (MHA)



Čís. Položky 209

An anthroposophical armchair, Gechinger Werkstätte Siegfried Pütz

Dosažená cena:

EUR 1.500,-

Vyvolávací cena:

EUR 1.500,-

(attributed), Germany c. 1930, four-legged, anthroposophical construction made of solid cherrywood, seat cover. Dimensions: height c. 85 cm, width c. 60 cm, depth c. 67 cm, height of seat c. 45 cm. (MHA)

Siegfried Pütz was born on 15.10.1907 in Berlin and died on 21.02.1979 in Ottersberg, Germany. “In 1922-1924 he attended the Stuttgart Waldorf School, where he met Rudolf Steiner. This encounter was decisive for his creative path. After studying sculpture in Karlsruhe, he continued his studies in Dornach with Karl Schubert among others. Together with the Waldorf teacher Karl Schubert he developed a “sculptural therapy” (Plastiziertherapie) at the beginning of the 1930s. Due to an occupational ban, he was forced to design and make furniture and utilitarian objects during the National Socialist era. During this period, he took up Steiner’s suggestions and implemented them in a contemporary way. After 1945 he was a teacher at the Waldorf School in Ottersberg for 11 years.” (<https://anthroposophische-kunsttherapie.de/anthro-medizin/kunsttherapie/wegbereiter/129siegfried-putz.html>, 29.05.2024)



Čís. Položky 210

A carpet after “Fischbild” by Paul Klee

Vyvolávací cena:

EUR 800,-

1925, manufactured by Ege Axminster / EgeArt Line, Denmark. Wool in various shades, primarily blue, with black and dark blue secondary and main border, retailer label on the reverse and “Design No. 80534”. Size c. 80 cm x 120 cm. Slight signs of age and use. (MHA)



Čís. Položky 212

Two armchairs mod. LC 1, designed by Le Corbusier, Pierre Jeanneret and Charlotte Perriand

Vyvolávací cena:

EUR 2.000,-

1928, manufactured by Cassina, four-legged chromium plated tubular steel construction, steel springs, the seat and rest with linen covering, armrests, leather straps, marked with engraved inscription and serial number 3239 amongst others, dimensions of each armchair: height c. 65 cm, width c. 59 cm, depth c. 65 cm, height of seat c. 40 cm. (MHA) Signs of age and use, scratches and abrasions, partly slight traces of oxidation.

An early model. Cf. Lit.: C. Greenberg, Mid Century Modern, 1995, p. 16.



Čís. Položky 205

Two early armchairs mod. “B 64 / Cesca”, designed by Marcel Breuer

Dosažená cena:

EUR 1.600,-

Vyvolávací cena:

EUR 700,-

1928, manufactured by Thonet, free-swinging chromium plated tubular steel constructions, the seat, back surface and armrest pads with black lacquered solid beechwood, marked with Thonet round metal plaques. Dimensions of each element: height c. 79 cm, width c. 59 cm, depth c. 59 cm. Signs of age and use, scratches and abrasions. (MHA)

Cf. Lit.: The Modern Chair, p. 52f, Thonet card catalogue.



Čís. Položky 213

A large table mod. LC 6 , designed by Le Corbusier, Pierre Jeanneret and Charlotte Perriand

Dosažená cena:

EUR 1.600,-

Vyvolávací cena:

EUR 1.000,-

1928, manufactured by Cassina, Italy, matte black lacquered steel construction, threaded support for height adjustment, rectangular crystal glass top, dimensions c. 225 cm x 85 cm, marked with engraved lettering and serial number. Signs of age and use, scratches and abrasions, partly with minor chipping. (MHA)

The "table tube d'avion" was exhibited at the Salon d'Automne in Paris in 1929. Cf. Lit.: K. J. Sembach - G. Leuthäuser - P. Gössel, Möbeldesign des 20. Jahrhunderts, Cologne 1993, p. 112/113.



Čís. Položky 214

A chaise longue LC4, designed by Pierre Jeanneret, Le Corbusier, Charlotte Perriand

Vyvolávací cena:

EUR 1.200,-

1928, for Cassina, black lacquered base with black lacquered cross struts, chaise longue with frame, black leather cover and detachable bolster. Frame and chaise longue marked with manufacturer's stamp, numbering and Le Corbusier inscription. Length c. 160 cm, depth c. 56 cm, height of seat c. 27 cm. Signs of age and use, scratches and abrasions. (MHA)



Čís. Položky 215

A large chandelier, E. Bakalowits & Söhne,

Vyvolávací cena:

EUR 1.000,-

Vienna c. 1960, classic, pared-down construction with 12 curved, radial arms made of cut glass, wired for 13 lights, 12 of which are candle-shaped. Dimensions: height c. 110 cm, diameter c. 70 cm. Slight signs of age and use, scratches and abrasions, without guarantee for electrical fitting.



Čís. Položky 211

A chaise longue LC4, designed by Le Corbusier, Pierre Jeanneret and Charlotte Perriand

Dosažená cena:

EUR 1.800,-

Vyvolávací cena:

EUR 1.200,-

1928, manufactured by Cassina, black lacquered base with black lacquered cross struts, chaise longue with frame, fur cover and detachable bolster. Frame and chaise longue marked with manufacturer's stamp, numbering 9578 and Le Corbusier inscription. Length c. 160 cm, depth c. 56 cm, height of seat c. 27 cm. Slight signs of age and use, scratches and abrasions. (MHA)



Čís. Položky 216

A large display cabinet from the Vienna Technical Museum,

Vyvolávací cena:

EUR 1.000,-

box-shaped construction made of black stained wood, the front and sides glazed with three doors and drawers, height c. 175 cm, width c. 270 cm, depth c. 70 cm. Signs of age and use, scratches and abrasions, partly minor chipping / losses (to the lacquer). (MHA)

Provenance: Formerly exhibited at the Technical Museum in Vienna.



Čís. Položky 217

A set of four armchairs no. 6009 (so-called "Wiener Sessel"), designed by Gebrüder Thonet,

Vyvolávací cena:

EUR 1.300,-

c. 1900, executed by the Thonet company at a later date, four-legged construction made of bent beechwood, plywood seats. Marked with Thonet adhesive label. Dimensions: height c. 77 cm, depth c. 50 cm, width c. 55 cm, height of seat 45 cm. Signs of age and use, scratches and abrasions. (MHA)

This model was a favourite of Le Corbusier and the German Bauhaus architects of the 1920s for their interiors.



Čís. Položky 218

A chandelier, for J. & L. Lobmeyr,

Vyvolávací cena:

EUR 1.200,-

Vienna, 1950s, classic, pared-down brass construction with curved, radial arms, pearl-, flower- and tear-shaped glass hangings made of cut crystal glass, wired for 8 lights. Height c. 40 cm, diameter c. 70 cm. Slight signs of age and use, scratches and abrasions, without guarantee for electrical fitting. (MHA)

This chandelier combines a classical form with the sputnik design of the 1950s.



Čís. Položky 219

Two armchairs from the auditorium of the University of Vienna,

Dosažená cena:

EUR 340,-

Vyvolávací cena:

EUR 300,-

four-legged construction made of dark stained wood, upholstered brown seat and back cover. Height c. 92 cm, width c. 66 cm, depth c. 75, height of seat c. 44 cm. Signs of age and use, scratches and abrasions, partly craquelure, partly small tears / fissures / covering with losses. (MHA)

Provenance: Formerly part of the interior decoration of the auditorium of the University of Vienna.



Čís. Položky 208

A chair mod. Hannes Chair, designed by Eliel Saarinen

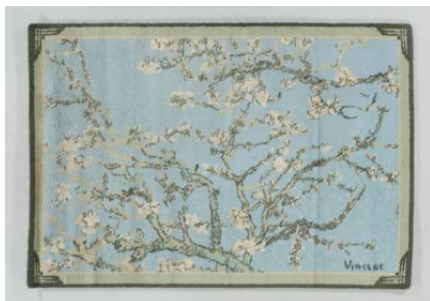
Dosažená cena:

EUR 1.100,-

Vyvolávací cena:

EUR 400,-

1908, manufactured by Adelta Finland, 1983, three-legged wood frame construction in mahogany, upholstered seat with embossed leather cover. Marked with manufacturer's adhesive label. Height c. 80 cm, width c. 55 cm, depth c. 55 cm, height of seat c. 44 cm. Signs of age and use, scratches and abrasions. (MHA)



Čís. Položky 220

A large carpet after “Amandelbloesem” (Almond Blossoms) by Vincent van Gogh

Dosažená cena:

EUR 1.500,-

Vyvolávací cena:

EUR 1.500,-

1890, manufactured by Ege Axminster / EgeArt Line, Denmark, wool in diverse, predominantly blue and light shades, framed by a greenish and dark-coloured border, retailer label on the reverse. Size c. 140 cm x 200 cm. Slight signs of age and use. (MHA)



Čís. Položky 221

An industrial table / table in industrial design, first third of the 20th century,

Vyvolávací cena:

EUR 1.200,-

cast-iron, varnished support with supplemented table top made of solid pear wood, dimensions: height c. 80 cm, width c. 110 cm, depth c. 55 cm, table top thickness c. 5 cm. In restored condition with signs of age and use, scratches and abrasions. (MHA)

This object can also be used as a console table due to its measurements.



Čís. Položky 222

A set of 4 park chairs, designed by Francois A. Carré, Paris

Dosažená cena:

EUR 1.500,-

Vyvolávací cena:

EUR 1.500,-

c. 1860, round bar steel, steel strips, black lacquered, die-cut inscription in the seat: U DE CARRE PARIS, height c. 78.5 cm, width c. 42 cm, depth c. 50 cm, seat height c. 41 cm. (DRAX)

The system of flat curved steel strips for seat and backrest goes back to Francois Carré and was used for park furniture worldwide. Purchased in France in around 1990. Lit.: G. Himmelheber, Möbel aus Eisen, Munich 1996, ill. 395, ill. 396, p. 232.